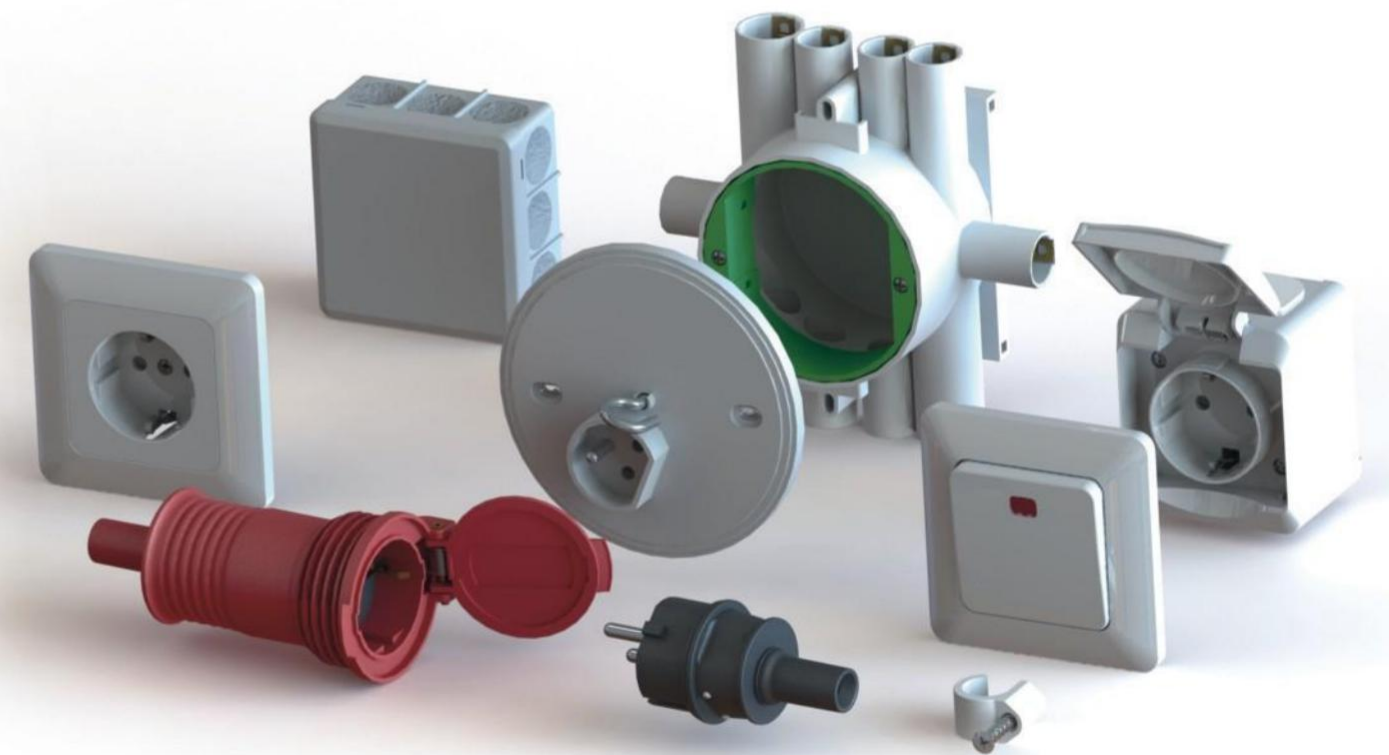


Make you available to see the safety easily!

EGANT™
A trade mark of Etman



Product catalog 2022/2023
For DIY Market

Manufacturer:

Etman Electric (Changzhou) Co.,Ltd.

213165 Lijia Town
Wujin District Changzhou City
Jiangsu Province
China
Tel: +86 519 68868200
Fax: +86 519 68868298
export@etman.cn
Http://export.etman.cn



Exclusive distributor for
Switzerland/Liechtenstein
MAX HAURI AG
<http://www.maxhauri.ch>



Exclusive distributor for Finland
KAUPPAHUONE HARJU OY
<http://www.etman.fi>



Distribution in Norway
Etman Distribusjon AS
<http://www.etman.no>



Distribution in Sweden
Etman Distribution AB
<http://www.etman.se>

Contents

01 02 03 04 05

CONTENTS

EGANT™

Egant is specially designed electric products of Etman for DIY market. Etman was established in 1990, in order to be a professional Electric products manufacturer and supplier. Etman International ASA is a Norwegian holding company with 4 subsidiaries located in China, Norway and Sweden. Etman Electric (Changzhou) Co, Ltd. is the manufacturing site of the group in China and located in Changzhou which is approximately 180 km west of shanghai, one of China's most attractive areas for production. So we have lots of experienced staffs to produce professional and innovative electric products with high quality and low production costs. Changzhou is located approximately 180 km west of Shanghai. Our company is ISO9001 and ISO14001 and ISO45001 certified and has more than 200 ITS approved items and factory certificates.

01: Cables

01~15

02: Installation Accessories

16~46

03: Switches, Sockets

47~86

04: Luminaire Materials

87~94

05: Plugs and sockets

95~100

LV installation wires

H07V-R

Description

Building wires are widely used for fixed electrical installations.
Flexible cords are also used for most domestic electric appliances.

Standards

International: HD 21.3; IEC 60227-1

Certification

Certified by VDE

Characteristics

Construction characteristics

Conductor flexibility: Stranded class 2

Insulation: PVC

Conductor material: Bare copper

Electrical characteristics

Rated Voltage U₀/U (Um): 450 / 750 V

Mechanical characteristics

Mechanical resistance to impacts: Low

Cable flexibility: Rigid

Usage characteristics

Max. conductor temperature in service: 70°C

Short-circuit max. conductor temperature: 160°C

Operating temperature, range: -5 .. 60°C

Weather resistance: Good

Flame retardant: C2, NF C 32-070

Chemical resistance: Accidental

Water proof: Low

Packed in polybag

Art.No.	Description/Remark	Packing
80700125	1.5mm ² , Blue	25M / bag
80700225	1.5mm ² , Black	25M / bag
80700325	1.5mm ² , Yellow/Green	25M / bag
80700425	1.5mm ² , Brown	25M / bag
80700525	1.5mm ² , White	25M / bag
80701125	2.5mm ² , Blue	25M / bag
80701225	2.5mm ² , Black	25M / bag
80701325	2.5mm ² , Yellow/Green	25M / bag
80701425	2.5mm ² , Brown	25M / bag
80701525	2.5mm ² , White	25M / bag



Packed in reel

Art.No.	Description/Remark	Packing
80700110	1.5mm ² , Blue	150M / plastic reel
80700210	1.5mm ² , Black	150M / plastic reel
80700310	1.5mm ² , Yellow/Green	150M / plastic reel
80700410	1.5mm ² , Brown	150M / plastic reel
80700510	1.5mm ² , White	150M / plastic reel
80701110	2.5mm ² , Blue	100M / plastic reel
80701210	2.5mm ² , Black	100M / plastic reel
80701310	2.5mm ² , Yellow/Green	100M / plastic reel
80701410	2.5mm ² , Brown	100M / plastic reel
80701510	2.5mm ² , White	100M / plastic reel



Packed in box

Art.No.	Description/Remark	Packing
80700111	1.5mm ² , Blue	100M / box
80700211	1.5mm ² , Black	100M / box
80700311	1.5mm ² , Yellow/Green	100M / box
80700411	1.5mm ² , Brown	100M / box
80700511	1.5mm ² , White	100M / box
80701111	2.5mm ² , Blue	100M / box
80701211	2.5mm ² , Black	100M / box
80701311	2.5mm ² , Yellow/Green	100M / box
80701411	2.5mm ² , Brown	100M / box
80701511	2.5mm ² , White	100M / box



H07Z1-R

Name:

Single core cables, insulated with halogen-free thermoplastic compound, for fixed wiring

TYPE: H07Z1-R 1×1.5...2.5mm²

Conductors:

Rigid stranded, copper, round

Class 2

Insulated material:

FR-PEX

LSZH (IEC 61034, IEC 60754-2)

Operating temperature: Maximum 70°C. Minimum bending 0°C

Colours:

Blue, Black, Green/Yellow, Brown, White, Grey, Orange

The product is in conformity with the provisions of the following European directive(s):

LVD

RoHS 2.0

Certificate(s): CE

Quality management system according to: ISO 9001

Environmental management system: ISO 14001

Occupational Health and Safety Management System: ISO 45001

The product complies with the standard(s): EN50525-3-31

Voltage Ratings: 450/750 volts grade

Minimum bending radius:

Diameter up to 10-4×overall diameter

Diameter above 25mm-5×overall diameter

Product info:

For electric power, lighting and internal wiring

H07Z1-R (FQ, S07Z1-R) is a halogen-free, Flame retardant insulated installation line of extremely low friction material with a round rigid stranded copper conductor. The cable is designed in accordance with EN 50525-3-31 where applicable. The conductor has thread count and resistance according to EN60228 class 2. AVCP (Assessment and Verification of Constancy of Performance); System 3. The cable meets fire class Dca-s2,d2,a2 according to CPR, harmoniserad standard EN50575. The conductor insulation must be protected against direct UV light which can occur, for example, in lighting fixtures and light signs.



Packed in plastic reel

Art.No.	Description/Remark	Packing
80708110	1.5mm ² , Blue	150M
80708210	1.5mm ² , Black	150M
80708310	1.5mm ² , Yellow/Green	150M
80708410	1.5mm ² , Brown	150M
80708510	1.5mm ² , White	150M
80708610	1.5mm ² , Grey	150M
80708710	1.5mm ² , Orange	150M
80709110	2.5mm ² , Blue	100M
80709210	2.5mm ² , Black	100M
80709310	2.5mm ² , Yellow/Green	100M
80709410	2.5mm ² , Brown	100M
80709510	2.5mm ² , White	100M
80709610	2.5mm ² , Grey	100M
80709710	2.5mm ² , Orange	100M
80710110	4.0mm ² , brown	150M
80710210	4.0mm ² , blue	150M
80710310	4.0mm ² , yellow/green	150M
80720110	6.0mm ² , brown	150M
80720210	6.0mm ² , blue	150M
80720310	6.0mm ² , yellow/green	150M



Pre-load in flexible tube

Type	Description/Remark
80702050	Cable H07Z1-R 2C1.5 with 16mm conduit (Blue , White) 50M/Roll
80702051	Cable H07Z1-R 2C1.5 with 16mm conduit (Blue, Yellow/Green) 50M/Roll
80702052	Cable H07Z1-R 2C1.5 with 20mm conduit (Blue, Yellow/Green) 50M/Roll
80703050	Cable H07Z1-R 3C1.5 with 16mm conduit (Brown, Blue , Yello/Green) 50M/Roll
80703051	Cable H07Z1-R 3C1.5 with 16mm conduit (Black , Blue , yellow/Green) 50M/Roll
80704050	Cable H07Z1-R 4C1.5 with 16 mm conduit (Brown, Blue , Black, Yello/Green) 50M/Roll
80703052	Cable H07Z1-R 3C2.5 with 16mm conduit (Brown, Blue , Yello/Green) 50M/Roll
80705050	Cable H07Z1-R 5C1.5 with 20mm conduit (Brown, Blue, Black, Grey, Yello/Green) 50M/Roll
80706050	Cable H07Z1-R 6C1.5 with 20mm conduit (Brown, Blue , Black, Orange, White, White) 50M/Roll
80706051	Cable H07Z1-R 6C1.5 with 20mm conduit (Brown, Blue , Yello/Green, Orange, White, White) 50M/Roll
80708050	Cable H07Z1-R with 20mm conduit (Brown, Blue, Black, Grey, Yello/Green) 50M/Roll



TP90

Portable 90°C double insulated cable for indoor low-voltage installations.

Example: Halogen lamps, down-light, solar system, speaker cable.

Standards

Construction: EN 50525

Flame retardant: IEC 60332-1

Halogen free: No

Certification: CE

Characteristics

Maximum operating temperature: 90°C

Operating voltage, U_o / U: 300 / 500V

Cenelec designation: N05ZVH2-R

Conductor: Stranded tinned copper

Insulation: Cross-linked Polyethylene (PEX)

Sheath: PVC

Colour: White

Marking: designation, dimension, meter

Packing: Etlina box



Art.No.	Cross Section(mm ²)	Dimension	Delivery Length (m)
81009015	2x1.5	4.8x7.8	100
81009025	2x2.5	5.6x9.3	100

LV Flexible cables**H03VVH2-F****Description**

For use with appliances and equipment intended for domestic, office and similar environments, such like: light portable apparatuses, i.e. table-lamp and radio.

Standards

International: HD 21.5

Certification

Certified by VDE

Flammability class

IEC 60332-1 and SS 424 14 75, cat. F2

Characteristics

Construction characteristics

Conductor material: Bare copper

Insulation: PVC

Outer sheath: PVC

Halogen free: No

Dimensional characteristics

Number of cores: 2

Electrical characteristics

Rated Voltage U_o/U (Um): 300 / 300 V

Usage characteristics

Operating temperature, range: 0 .. 70°C



Art.No.	Cross section (mm ²)	Sheath colour	Conductor(mm)
80000500	2x 0.75	White	24xØ0.2
80000400	2x 0.75	Black	24xØ0.2
80000600	2x 0.75	Silver	24xØ0.2
80000700	2x 0.75	Brass	24xØ0.2
80001700	2x 0.75	Gold	24xØ0.2

H03VV-F

Name:
Connecting cable

TYPE:
H03VV-F 3G0.75mm²

Conductors:
Flexible conductors (classes 5), annealed copper

Insulated material:
PVC

Operating temperature:
Maximum 70°C. Minimum bending 0°C

Sheath color:
White

The product is in conformity with the provisions of the following European directive(s):
LVD
RoHS 2.0

Certificate(s):
VDE

Quality management system according to:
ISO 9001

Environmental management system:
ISO 14001

Occupational Health and Safety Management System:
ISO 45001

The product complies with the standard(s):
EN50525-2-11

Product info:
The cable is intended for indoor use for connecting light weight portable devices, for example: table lamp and radio.

H03VV-F is a round and light, lead-free, PVC-insulated, PVC-sheathed connection cable with round, multi-wire copper conductors. The cable is designed according to SS EN 50525-2-11. The conductors have resistance according to EN 60228 class 5. The connected parts are color marked according to HD 308. The jacket is marked with, for example, "◀VDE▶ H03VV-F 3G0.75mm² Etman Electric (Changzhou) Co., Ltd. 300/300V". H03VV-F meets fire requirements according to IEC 60322-1 (F2). The cable is approved by VDE.



DIMENSIONAL CHARACTERISTICS	
Number of conductor	3
conductor, area	0.75mm ²
Number of conductor wires x wire diameter	24 x ? 0.20 mm
Insulation, thickness	0.5mm
Sheath, thickness	0.6mm
Outer diameter, nom	? 5.7mm
Average outer diameter	lower limiting value ? 5.2 upper limit value ? 6.7

ELECTRICAL PROPERTIES	
Conductor resistance at 20°C, max	26 ohm/km
Rated voltage, Uo/U	300/300 V

USAGE	
Operating temperature, range	0~70°C

Type Table

TYPE	DESCRIPTION/REMARK
80003000	H03VV-F 3G0.75mm ²

H05VV-F

Description
The cable may be used in indoors, even in moist environments, for connecting of heavier household apparatuses, i.e. refrigerator and washing machine.

Standards
International: HD 21.5

Certification
Certified by VDE

Flammability class
IEC 60332-1 and ss 424 14 75, cat. F2

Characteristics
Construction characteristics
Conductor material: Bare copper
Insulation: PVC
Outer sheath: PVC
Halogen free: No
Electrical characteristics
Rated Voltage Uo/U (Um): 300 / 500 V
Usage characteristics
Operating temperature, range: 0 .. 70°C



Art.No.	Cross section (mm ²)	Sheath colour	Conductor(mm)
80002000	3G1.0	White	32xØ0.2
80002100	3G1.5	White	48xØ0.2
80002200	3G2.5	White	80xØ0.2
80002300	3G4.0	White	128xØ0.2
80002001	3G1.0	Black	32xØ0.2
80002101	3G1.5	Black	48xØ0.2
80002201	3G2.5	Black	80xØ0.2
80002301	3G4.0	Black	128xØ0.2

Rubber Cables

H07RN-F

Description

H07RN-F is an EPR insulated and PCP (Polychloroprene), more commonly referred to as OFR (Oil resistant & flame retardant) sheathed connection cable with circular, multi stranded copper conductors. The cable is designed according to HD 22.4. The conductors have resistance according to IEC 60228 class 5. The cores are identified by colours according to HD 308.

H07 is an oil and grease resistant flexible cable, durable against high temperature, moisture and frost. It may be used for temporary installations indoors and outdoors and is suitable to connect machines and other materials that require a flexible cable. This cable can be used in refrigerating installations. The cable can also be buried but with extra mechanical protection.

Standards: HD 22.4

Note

Max continuous operating conductor temperature in normal use:

+60°C (in every case of mobile installation)

+85°C (fixed protected installation)

+200°C (in short circuit)

Permissible current rating is measured for an ambient temperature of 30°C and a maximum operating and conductor temperature of 85°C. For other temperature please refer to correction factors.

Certification: Certified by VDE

Art.No.	Cross section (mm ²)	Sheath colour	Packing
80601050	3G1.5	Black	50M / polybag
80601150	3G2.5	Black	50M / polybag
80601250	4G2.5	Black	50M / polybag
80601350	4G4.0	Black	50M / polybag
80601450	4G6.0	Black	50M / polybag
80601550	5G1.5	Black	50M / polybag
80601650	5G2.5	Black	50M / polybag
80606050	3G1.5	Red	50M / polybag
80606150	3G2.5	Red	50M / polybag
80606250	4G2.5	Red	50M / polybag
80606350	4G4.0	Red	50M / polybag
80606450	4G6.0	Red	50M / polybag
80606550	5G1.5	Red	50M / polybag



H05RR-F

Description

H05RR-F is an EPR (Ethylene propylene rubber) or VIR (Vulcanized insulated rubber), more commonly known as VRI insulated and TRS (Tough rubber sheath) sheathed connection cable with circular, multi stranded copper conductors. The cable is designed according to HD 22.4. The conductors have resistance according to IEC 60228 class 5. The cores are identified by colours according to HD 308.

H05 is an oil and grease resistant flexible cable, durable against high temperature, moisture and frost. It may be used for temporary installations indoors and outdoors and is suitable to connect machines and other materials that require a flexible cable. This cable can be used in refrigerating installations. The cable can also be buried but with extra mechanical protection.

Standards: HD 22.4

Note

Max continuous operating conductor temperature in normal use:

+60°C (in every case of mobile installation)

+85°C (fixed protected installation)

+200°C (in short circuit)

Permissible current rating is measured for an ambient temperature of 30°C

and a maximum operating and conductor temperature of 85°C. For other temperature please refer to correction factors.

Certification: Certified by VDE

Art.No.	Cross section (mm ²)	Sheath colour	Packing
80600050	3G1.5	Black	50M / polybag
80600150	3G2.5	Black	50M / polybag
80605050	3G1.5	Red	50M / polybag
80605150	3G2.5	Red	50M / polybag



LAN Cables

Cat 5e Cables

Description

Category 5e cables are the standard 100MHz. Manufactured in accordance with TIA 568-B and IEC 61156-5, they are suitable for basic voice & data installations.

U/UTP construction

Complies to latest cat 5e standards

Supports Gigabit Ethernet
Guaranteed performance to 100MHz
Single foil offers EMC performance

Standards

International: ISO/IEC 11801

Performance

Category 5e cables are compliant with the requirements of the TIA 568-B and IEC 61156-5.

Electrical Performance all values are specified at 20°C

Frequency	Attenuation dB/100m	NEXT dB	ACR dB/100m	PS NEXT (*) dB	ELFEXT dB/100m	PSELFEXT dB/100m	RL dB
4	4.1	56.3	52.2	53.3	51.7	49.0	23.0
10	6.5	50.3	43.8	47.3	43.8	41.0	25.0
16	8.3	47.2	38.9	44.3	39.7	36.9	25.0
20	9.3	45.8	36.5	42.8	37.7	35.0	25.0
31.25	11.7	42.9	31.2	39.9	33.9	31.1	23.6
62.5	17.0	38.4	21.4	35.4	27.9	25.1	21.5
100	22.0	35.3	13.3	32.3	23.8	21.0	20.1

(*) Dual cable versions additionally comply to the additional PSNEXT requirements for multi-unit cables as specified in the relevant TIA and IEC cable standards.

Art.No.	Type of cable	Sheath colour	Length (m)	Packaging
80101210	U/UTP	Grey	305	Box



LAN Cables

Cat 6 Cables

Description

Cat 6 cables are manufactured and tested to the latest Category 6 specifications.

Unshielded construction

Complies to the latest Category 6 standards
Central cross maintains geometry and performance
Supports Class E applications up to 250 MHz.

Standards

International: ISO/IEC 11801

Design

The conductors are 24 AWG solid copper wires complying with IEC 60228. The PE central cross filler keeps the pairs in place and reduces the risks of losing performance when bending the cable.

Performance

Cat 6 cables are compliant with the requirements of the TIA 568-B.2-1 and ISO/IEC 11801:2002.

Installation

Thanks to their small nominal outer diameter, Cat 6 cables are as easy to install as their Cat 5e equivalent.

Channel Performance

Values given for 2-conductor channel, built with Essential-6 cable, outlet and patch panel.

Frequency Mhz	Insertion Loss dB/100m	NEXT PP dB	PS NEXT dB	ACR dB/100m	PS ACR dB/100m	ELFEXT dB/100m	PSELFEXT dB/100m	Return Loss dB
1	4.0	65.0	62.0	65.0	62.0	63.3	60.3	19.0
4	4.2	63.0	60.5	58.9	56.4	51.2	48.2	19.0
10	6.6	56.6	54.0	50.0	47.4	43.3	40.3	19.0
16	8.3	53.2	50.6	44.9	42.3	39.2	36.2	18.0
20	9.3	51.6	49.0	42.3	39.7	37.2	34.2	17.5
31.25	11.7	48.4	45.7	36.7	34.0	33.4	30.4	16.5
62.5	16.9	43.4	40.6	26.5	23.7	27.3	24.3	14.0
100	21.7	39.9	37.1	18.2	15.4	23.3	20.3	12.0
155	27.6	36.7	33.8	9.1	6.2	19.5	16.5	10.1
200	31.7	34.8	31.9	3.1	0.1	17.2	14.2	9.0
250	35.9	33.1	30.2	-2.8	-5.8	15.3	12.3	8.0

All values are specified at 20°C.

Art.No.	Type of cable	Sheath colour	Length (m)	Packaging
80101310	U/UTP	Orange	305	Box



Coaxial Cables

SAT

SAT is often used to transmit TV signal, video observation system and others.

Construction characteristics

Conductor shape: Single wired
 Conductor material: Copper
 Insulation: Foamed PE
 Outer core type: Aluminium tape and aluminium braid
 Outer sheath: PVC
 Colour: White

Dimensional characteristics

Conductor diameter: 1.0mm
 Diameter over insulation: 4.8mm
 Nominal outer diameter: 7.0mm
 Average sheath thickness: 0.85mm
 Approximate weight: 2.5kg/100m

Electrical characteristics

Characteristic impedance: 75Ohm

Transmission characteristics

Attenuation, max. 55 MHz: 13.0dB/100m
 Attenuation, max. 250 MHz: 17.8dB/100m
 Attenuation, max. 450 MHz: 25.7dB/100m
 Attenuation, max. 865 MHz: 35.6dB/100m

Usage characteristics

Laying operation bending radius: 40mm

Packaging: Reel

Ambient installation temperature, range: -10 .. 50°C

Operating temperature, range: -15 .. 70°C

Packed in box

Art.No.	Type of cable	Sheath colour	Length (m)	Packaging
80200610	SAT	White	100	Reel



13

Coaxial Cables

RG-6

RG-6 is often used to carry baseband video in closed-circuit television, previously used for cable television (CATV). Generally it has poor shielding but will carry an HQ HD signal or video over short distances.

Construction characteristics

Conductor shape: Single wired
 Conductor material: Copper-clad steel
 Insulation: Foamed PE
 Outer core type: Aluminium tape and aluminium braid
 Outer sheath: PVC
 Colour: White

Dimensional characteristics

Conductor diameter: 1.0mm
 Diameter over insulation: 4.8mm
 Nominal outer diameter: 7.0mm
 Average sheath thickness: 0.66mm
 Approximate weight: 3.1kg/100m

Electrical characteristics

Characteristic impedance: 75Ohm

Transmission characteristics

Attenuation, max. 55 MHz: 6.1dB/100m
 Attenuation, max. 250 MHz: 13.0dB/100m
 Attenuation, max. 450 MHz: 17.8dB/100m
 Attenuation, max. 865 MHz: 25.7dB/100m

Usage characteristics

Laying operation bending radius: 35mm

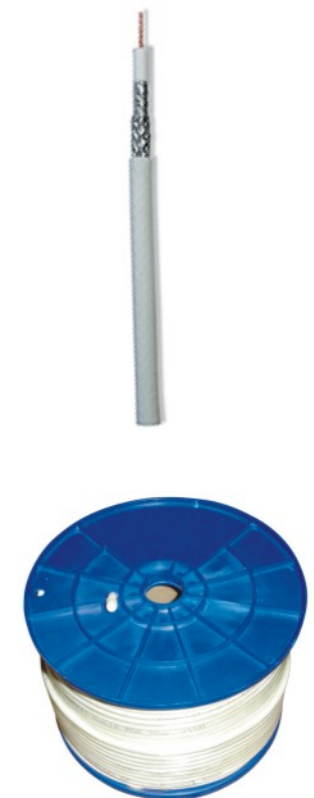
Packaging: Reel

Ambient installation temperature, range: -10 .. 50°C

Operating temperature, range: -15 .. 70°C

Packed in box

Art.No.	Type of cable	Sheath colour	Length (m)	Packaging
80200010	RG-6	White	100	Reel



14

Speaker wires

Speaker wire is used to make the electrical connection between loudspeakers and audio amplifiers.

Conductors insulated by transparent PVC. Multi stranded copper conductors

Characteristics

Construction characteristics

Conductor flexibility: Flexible class 5

Conductor material: Bare annealed copper

Outer sheath: PVC Screen: No Halogen free: No

Dimensional characteristics

Number of cores: 2

Usage characteristics

Packaging: 100M/reel, other length available

Ambient installation temperature, range: 0 .. 50°C

Operating temperature, range: 0 .. 70°C



Maximum wire lengths for two conductor copper wire

Cross section (mm ²)	2Ωload	4Ωload	6Ωload	8Ωload
0.75 mm ²	1.5 m	3 m	4.5 m	6 m
1.0 mm ²	2.4 m	14.9 m	7.3 m	9.7 m
1.5 mm ²	3.6 m	7.3 m	11 m	15 m

Art.No.	Cross section (mm ²)	Packing
80300010	2×1.5	100M/reel
80300500	2×2.5	100M/reel
80300600	2×4.0	100M/reel

Single way universal flush mounting wall boxes

IP-Class: IP30

Certificate(s): Semko, CE

For single (12-13mm) or double (24-26mm) gypsum plates.

Ø71mm depth 60mm.

Modular system: Boxes can be ganged in comprehensive accessories.

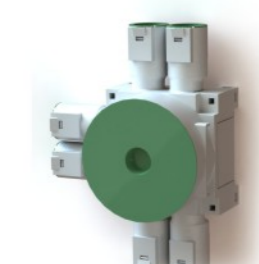
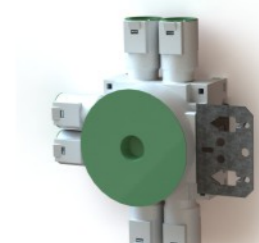
Conduit entries: 2-way compatible Ø 20mm or Ø 16mm conduit, with locking springs and sealing plugs.

Plastic lid inclusive.

Two or more boxes can be connected by using different connecting pieces. B332 constructed for c-c distance of 71 mm between the boxes and B333 for c-c distance of 84 mm.

With Steel fastening plate, steel plate for fastening directly to wooden stanchion.

By double plaster used 6mm extension ring (013) that can be built on top of each other, or 12mm extension ring (543) that can be built on top of each other



Type Table

TYPE	DESCRIPTION/REMARK
B338	For single wall plate and 3x2 combined 16/20mm inlets
B388	For double wall plate and 3x2 combined 16/20mm inlets
013	Extension ring for single wall box, H=6 mm
543	Extension ring for single wall box, H=12mm



1.5 way universal flush mounting wall boxes



IP-Class: IP30
Certificate(s): Semko, CE
Technical info:

1.5 box is a very flexible wall box and designed for the low model double Schuko socket outlets. For single (12-13mm) or double (24-26mm) gypsum plates. 71*90mm depth 60mm.

Modular system: Boxes can be ganged in comprehensive accessories. With 2x2-way compatible Ø 20mm or Ø 16mm conduit entries, with locking springs and sealing plugs. Plastic lid inclusive.

Boxes can be connected with single, one and half or double box by use of different connecting pieces: B332 constructed for c-c distance of 71 mm between the boxes and B333 for c-c distance of 84 mm. With steel fastening plate, steel plate for fastening directly to wooden stanchions or with screws to steel stanchions.

Fixing centre 60mm and M3 screws.

By double plaster used 6mm Extension ring (617) that can be built on top of each other.

Type Table

TYPE	DESCRIPTION/REMARK
B613	For single wall plate, with 2x2 combined 16/20mm inlets, vertical
B614	For double wall plate, with 2x2 combined 16/20mm inlets, vertical
B615	For single wall plate, with 2x2 combined 16/20mm inlets, horizontal
B616	For double wall plate, with 2x2 combined 16/20mm inlets, horizontal
617	Extension ring for one and half wall box, H=6mm

2 way universal flush mounting wall boxes



IP-Class: IP30
Certificate(s): Semko, CE

For single (12-13mm) or double (24-26mm) gypsum plates. 71*142mm depth 60mm.

Modular system: Boxes can be ganged in comprehensive accessories.

One side with 2-way compatible Ø 20mm or Ø 16mm conduit entries, with locking springs and sealing plugs. Another side with 3-way Ø 16mm conduit entries, with locking springs and sealing plugs. Plastic lid inclusive.

Boxes can be connected with single, one and half or another double box by use of different connecting pieces: B332 constructed for c-c distance of 71 mm between the boxes and B333 for c-c distance of 84 mm.

With or without steel fastening plate, steel plate for fastening directly to wooden stanchions or with screws to steel stanchions.

Fixing centre c-c 60mm and M3 screws, 71 mm gang distance.

By double plaster used 6mm Extension ring (547) that can be built on top of each other.

Type Table

TYPE	DESCRIPTION/REMARK
B610	W/steelplate for single wall plate, with 2 combined 16/20mm inlets and 3x16mm inlets
B611	W/steelplate for double wall plate, with 2 combined 16/20mm inlets and 3x16mm inlets
547	Extension ring for double wall box, H=6mm

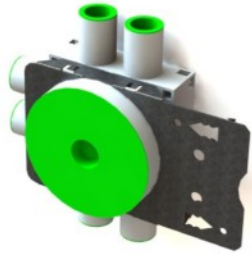
Accessories for universal boxes

Type Table

TYPE	DESCRIPTION/REMARK
B332	Frame extension (71mm)
B333	Frame extension (84mm)
B384	Blind extension
B339	Extra inner ring, H=37mm



Flush mounting wall boxes



IP-Class: IP20
Certificate(s): Semko, CE
 For single (12mm) or double (24mm) gypsum plates
 Ø71mm depth 45mm-55mm
 With or without steel fastening plate, steelplate for fastening directly to wooden stanchions or with screws to steel stanchions
 Turn able ring is with fixing centre 60mm and M3 screws.
 The box has 6 conduit entries: 6*Ø16mm, locking springs, sealing plugs and plastic lid. It is possible to enter Ø20mm conduit by using Ø20mm sleeve ETM 238S on the outside of the entries.
 Plastic lid inclusive
 Extension rings (B013) is available for the mounting boxes. It is 7 mm deep.



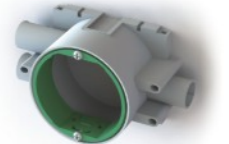
Type	Colour	Description/Remark
B001	White body, green sealing plugs and plastic lid	for 12mm wall plate , H=45mm
B001-2	White body, green sealing plugs and plastic lid	for 12mm wall plate , H=55mm
B001-4	White body, green sealing plugs and plastic lid	for 24mm wall plate , H=55mm
B001-1	White body, green sealing plugs and plastic lid	w/steelplate for 12mm wall plate , H=45mm
B001-3	White body, green sealing plugs and plastic lid	w/steelplate for 12mm wall plate , H=55mm
B001-5	White body, green sealing plugs and plastic lid	w/steelplate for 24mm wall plate , H=55mm
013	White	Extension ring, H=6mm

IP-Class: IP20
Certificate(s): SEMKO
 For single (12-13mm) or double (24-26mm) gypsum plates
 Ø71mm depth 50mm
 Turn able ring is with fixing centre 60mm and M3 screws. The inner will be locked by locker when tightened up the screws.
 Circular flush mounting box for accessory is made of insulated materials.
 With 3 inlets for Ø16mm conduit, with/without locking spring, one inlets opened and two inlets closed for keep box clean, you can open what you need by screwdriver.
 Only use for electrical wiring
 The box can connect each other by locker on the side.

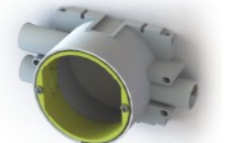
Type	Colour	Description/Remark
B520	White body ,yellow inner ring	For 26mm wall plate
B521	White body ,Green inner ring	For 13mm wall plate
B522	White body ,yellow inner ring	For 26mm wall plate, with locking spring
B523	White body ,Green inner ring	For 13mm wall plate, with locking spring



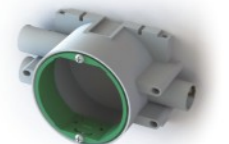
B520



B521

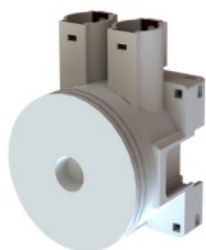


B522



B523

Flush mounting wall boxes



B602



B603



B604

IP-Class: IP20

Certificate(s): CE

c/c 60mm

3 knock-outs on the side

2 knock-out on the bottom

2 branch outlets for Ø16, 20mm conduits

Two kinds of conduit inlets:

Multi-used for Ø16, 20mm conduits

strain-relief inlet, it is used in conduitless flush mounting to fasten 5 x 2,5 mm² cables to the mounting boxes or junction boxes

Art.No.	Type	Description/Remark
81020100	B602	Mounting box for flush type Apparatus with screw fixing for dry locations
81120000	B603	Ø16/20mm conduits inlet
81120100	B604	Strain-relief inlet

Flush mounting Junction box



B601

c/c 78mm, M4 screws

8 knock - outs on the side

4 knock - out on the bottom

Depth: 47mm

Art.No.	Type	Description/Remark
81020000	B601	Junction box c-c 78mm for flush mounting

INSTALLATION ACCESSORIES

Flush mounting Junction boxes

Certificate(s): SEMKO

Technical info:

For single (12-13mm) or double (24-26mm) gypsum plates
 Ø82mm depth 48mm

Turn able ring is with fixing centre 67mm and M3 screws. The inner will be locked by locker when tightened up the screws.

Circular flush mounting box for accessory is made of insulated materials.

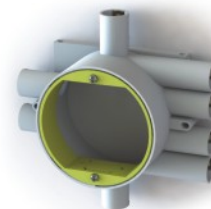
Only be used for electrical wiring

With 8 inlets for Ø16mm conduit, with locking spring, one inlets opened and others closed for keep box clean, you can open what you need by screwdriver.

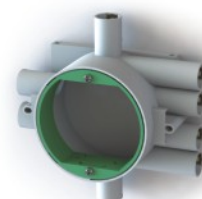
Type	Colour	Description/Remark
B524	White body, yellow inner ring	For 26mm wall plate, with locking spring
B525	White body, Green inner ring	For 13mm wall plate, with locking spring

With 2 inlets for Ø20mm conduit and 8 inlets for Ø16mm conduit, with locking spring, one inlets opened and others closed for keep box clean, you can open what you need by screwdriver.

Type	Colour	Description/Remark
B524N	White body, yellow inner ring	For 26mm wall plate, with locking spring
B525N	White body, Green inner ring	For 13mm wall plate, with locking spring



B524



B525



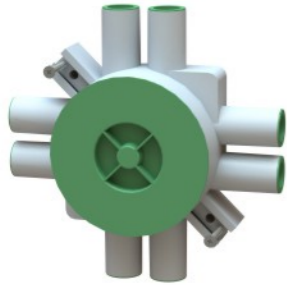
B524N



B525N

Flush mounting roof boxes

IP-Class: IP30
Certificate(s): Semko, CE
Technical info:
 Ø82mm depth 32mm-40mm.
 Mounting screws: M4.
 Distance 70 mm between inside mounting screws.
 The box has 8 conduit entries: 8 X Ø16 mm, locking springs, sealing plugs and plastic lid are included. Possible to enter Ø20 mm conduit by using of Ø20 mm sleeve 238 on the outer of the entries.
 Plastic lid inclusive.
 Max load 15 kg.



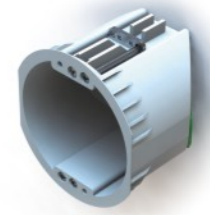
Type Designation:

TYPE	DESCRIPTION/REMARK
B002	For single wall plate, with 2x2 combined 16/20mm inlets, vertical
B002-2	For double wall plate, with 2x2 combined 16/20mm inlets, vertical
B002-3	For single wall plate, with 2x2 combined 16/20mm inlets, horizontal

Multi boxes

IP-Class: IP20
Technical info:
 For use in prefabricated walls or hollow walls where installation works can be conducted from the outside of the wall and when you need an extra flush wall box. Requires a 6mm minimum panel-thickness.

B220 has 2 fixed entries for Ø16 mm plastic conduits, you can open one more if you want to.
 A special milling-cutter for drilling hole for the Multibox in a panel, diam. 69 mm (not suitable for Steel panels) can be ordered. A special effective plier to dismantle the cable inside the box, called Multiplier can also be ordered.
 With 2 fixed entries. Locking springs, sealing plugs and plastic lid is included
 Box screw distance cc 60 mm and M3 screws.



B220

Type	Description/Remark
B220	Multibox for prefabricated walls, Ø71mm depth 61mm

Simple version, with knockout on the bottom of box, fixation screw distance c-c 60mm and M3 screws.

Type	Description/Remark
ETM390S	Wall Box & Roof Box 68mm, H=35mm
ETM391S	Wall Box & Roof Box 68mm, H=45mm
ETM392S	Wall Box & Roof Box 2 X 68mm, H=45mm
ETM593S	Wall Box & Roof Box 3 X 68mm, H=45mm



ETM390S/391S

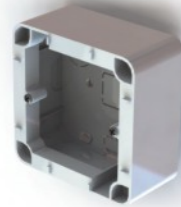
ETM392S

ETM593S

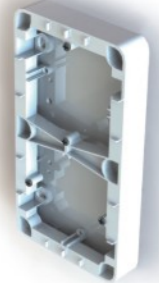
Surface mounting frames



B239



B240



B430



B429



B409

IP-Class: IP20

Technical info:

For already complete upholstered wall or corner of wall need add switch, socket, dimmer, timer or other electrical accessories.

Distance between fixing centre is 71 mm.

Distance of fixing centre is 60mm and M3 screws.

Without conduit entries.

84*84mm or 84*155mm depth 20mm/40mm

Type	Description/Remark
B239	1 way , on wall frame for switch etc. , H=20mm
B240	1 way , on wall frame for dimmer etc. , H=40mm
B430	2 way , on wall frame for switch etc. , H=20mm
B429	2 way , on wall frame for dimmer etc. , H=40mm
B409	2 way , on wall frame for dimmer etc. , H=40mm

Surface mounting frames

Type	Description/Remark
B402	2 way frame for corner of wall
B407	3 way frame for corner of wall



B402



B407

Surface mounting junction boxes

Junction box IP20, 65*65

Technical Data: 380VAC

Rated Connecting Cap: 2.5

IP-Class: IP20

Technical info:

square junction box is spacious and easy to wire. The box is equipped with an insulated 5-way connector. The transparent wire connector makes it easy to ensure sufficient wire depth. The maximum wire capacity per connector is 3 x 2,5 mm² or 4 x 1,5 mm². The box has 6 knock-outs, 2 of which are in the bottom.

Surface mounting

The minimum and maximum temperatures during installation: -5°C - +60°C



B219

Type	Description/Remark
B219	Junction box , IP20 , 5 pol

Junction box IP20, 90*65

Technical Data: 440VAC

Rated Connecting Cap: 6

IP-Class: IP20

Certificate(s): CE, Semko

Technical info:

Junction box has two 3-pole insulate 6 mm² connectors. The base plate offers a choice of eight different connection points for the connectors. In the bottom of the box there are four knock-outs. The cover has knock-outs in the corners and on the long sides of the cover. The maximum wire capacity per connector is 8 x 1,5 mm² or 5 x 2,5 mm².

Surface mounting

The minimum and maximum temperatures during installation: -5°C - +60°C



B218

Type	Description/Remark
B218	Junction box , IP20 , 6 pol

Surface mounting junction boxes

Junction box IP54, 82*82

Technical Data: 400VAC

Rated Connecting Cap: Maximum 3x2.5mm²/clamp or Maximum 4x1.5mm²/clamp

IP-Class: IP54

Certificate(s): CE, Semko

Technical info:

square junction box is spacious and easy to wire. The box is equipped with an insulated 5-way connector. The transparent wire connector makes it easy to ensure sufficient wire depth. equipped with 8 membrane cable entries (Ø 19 mm) in the sides. In the bottom of the box there are four knock-outs. Cables are easy to through the inlets. The maximum wire capacity per connector is 3 x 2,5 mm² or 4 x 1,5 mm². The box has 6 knock-outs, 2 of which are in the bottom.

Surface mounting

The minimum and maximum temperatures during installation: -5°C - +60°C



Type	Description/Remark
B232	Junction box , IP54 , 5 pol
B2320	Junction box , IP54 , without terminal

Junction box IP65

Technical Data: 400VAC

Rated Connecting Cap:

B432: 2.5

B233: 2.5

B434: 6

IP-Class: IP65

Certificate(s): CE, Semko

Technical info:

The square junction box is equipped with 12 membrane cable entries in the sides, and two on the bottom. Cables are easy to connect by simply inserting the stripped ends through the inlets. The box locks by snapping and can be opened by inserting a screwdriver (for example) into the opening slots - no screws are needed. The box can be furnished with the strain-reliefs on the center pin.

Surface mounting

The minimum and maximum temperatures during installation: -5°C - +60°C

Type	Description/Remark
B432	Junction box, 75*75*38
B233	Junction box, 85*85*38.5
B434	Junction box, 105*105*46
B432P	Junction box, 75*75*38, with centerpin
B233P	Junction box, 85*85*38.5, with centerpin
B434P	Junction box, 105*105*46, with centerpin
B432PT	Junction box, 75*75*38, with terminal
B233PT	Junction box, 85*85*38.5, with terminal
B434PT	Junction box, 105*105*46, with terminal



Accessories

Cover, Fixing center c-c 60mm



003



540

Type	Description/Remark
003	Ø90
540	Ø90, with screw cover

Cover, For Junction box 67mm, quick installation, no need screw



526



527

Type	Description/Remark
526	Ø100
527	Ø100, with cable entry hole

Cover, Fixing center c-c 67mm



004-1



528

Type	Description/Remark
004-1	Ø100
528	Ø100, with cable entry hole

Cover, Fixing center c-c 70mm



004



539

Type	Description/Remark
004	Ø100
539	Ø100, with hook

Accessories

Cover, Fixing center c-c 67-78mm

Type	Description/Remark
005	Ø110, with hook
541	Ø100



005



541

Cover, Fixing center c-c 78mm

Type	Description/Remark
539-1	Ø110



539-1

Connection cover, fixing center c-c 78mm For cables Ø 6,0 - 15,0 mm

Type	Description/Remark
ETM542S44V2	Ø100, connection cover, IP44



ETM542S44V2

Accessories

Flexible tube for wire fixing PE 320N

Normal in 100mtr, but you can order how long you want.



Art.No.	Description/Remark
82401610	Ø16mm tube , White , 10Mtr.
82401625	Ø16mm tube , White , 25Mtr.
82402010	Ø20mm tube , White , 10Mtr.
82402025	Ø20mm tube , White , 25Mtr.
82401660	Ø16mm tube , White , 100Mtr.
82402060	Ø20mm tube , White , 100Mtr.

Straight extension pipe



Type	Description/Remark
237	Ø16mm, with locker
238	Ø20mm, with locker
655	Ø25mm, extension pipe
656	Ø32mm, extension pipe
657	Ø40mm, extension pipe
658	Ø50mm, extension pipe



Type	Description/Remark
237-1	Ø16mm, without locker

Flexible tube for the cable holding



Art.No.	Description/Remark
82402510	Ø25mm tube / 5M silver-colour with 5 pcs plastic tie
82402520	Ø25mm tube / 5M white-colour with 5 pcs plastic tie
82402530	Ø25mm tube / 5M black-colour with 5 pcs plastic tie

Nylon Line For Pulling Wire Through Tube



Art.No.	Description/Remark
ETM530S	10Mr. Ø3mm
ETM531S	20Mr. Ø3mm

Accessories

Cable Tie

Material:
Nylon 66, 94V-2 certificated by UL, heat-resisting, erosion control, insulate well and not apt to age.
Operating temperature: -40°C to 85°C

Art.No.	Type	Description/Remark	Packaging
81501000	ETM300S	2.5x100mm , Black Colour, UV Resistant	100 pcs/bag
81501100	ETM314S	2.5x200mm , Black Colour, UV Resistant	100 pcs/bag
81501200	ETM302S	3.6x140mm , Black Colour, UV Resistant	100 pcs/bag
81501300	ETM315S	3.6x200mm , Black Colour, UV Resistant	100 pcs/bag
81501400	ETM316S	3.6x280mm , Black Colour, UV Resistant	100 pcs/bag
81501500	ETM304S	4.8x200mm , Black Colour, UV Resistant	100 pcs/bag
81501600	ETM306S	4.8x280mm , Black Colour, UV Resistant	100 pcs/bag
81501700	ETM308S	4.8x380mm , Black Colour, UV Resistant	100 pcs/bag
81501800	ETM317S	7.2x350mm , Black Colour, UV Resistant	100 pcs/bag
81501900	ETM310S	7.2x550mm , Black Colour, UV Resistant	100 pcs/bag
81502000	ETM318S	7.6x380mm , Black Colour, UV Resistant	100 pcs/bag



Art.No.	Type	Description/Remark	Packaging
81505000	ETM301S	2.5x100mm , Natural Colour	100 pcs/bag
81505100	ETM298S	2.5x200mm , Natural Colour	100 pcs/bag
81505200	ETM303S	3.6x140mm , Natural Colour	100 pcs/bag
81505300	ETM319S	3.6x200mm , Natural Colour	100 pcs/bag
81505400	ETM312S	3.6x280mm , Natural Colour	100 pcs/bag
81505500	ETM305S	4.8x200mm , Natural Colour	100 pcs/bag
81505600	ETM307S	4.8x280mm , Natural Colour	100 pcs/bag
81505700	ETM309S	4.8x380mm , Natural Colour	100 pcs/bag
81505800	ETM313S	7.2x350mm , Natural Colour	100 pcs/bag
81505900	ETM311S	7.2x550mm , Natural Colour	100 pcs/bag
81506000	ETM299S	7.6x380mm , Natural Colour	100 pcs/bag

Cable fixture with glue

Art.No.	Type	Description/Remark	Packaging
82900110	829001	White	10 pcs/bag



Wire holder self fasten

Art.No.	Type	Description/Remark	Packaging
82900210	829002	White	10 pcs/bag



Accessories

Cable trunking

Technical details

- Plastic, insulating, shock-proof, self-extinguishing material in compliance with UL 94 V0 Standard and resistant to abnormal heat and fire up to 960°C (glow wire test) in compliance with IEC 695-2-1 Standard
- Dimensional stability from -20 to +60°C
- Resistant to acids, oils and greases
- Standard 2-metre long
- Easy-to-position self-adhesive base
- Acrylic-base adhesive, resistant to the light and to ageing
- Residential application
- Degree of protection Ip40
- Resistance to impacts: 6 joules
- Wall and ceiling mounting, fastening with dowels
- Complete accessories

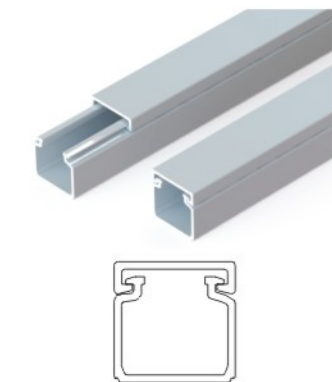
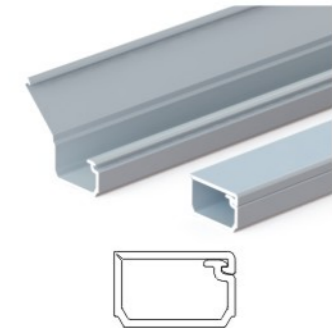
One Piece cable trunking with self adhesive

One piece surface raceway is a single channel designed to route, protect and conceal video or power cabling, can be opened and closed repeatedly without cracking.

Art.No.	Type	Description/Remark
81600001	816000	9*5, white, 2.0M
81600300	816003	12*7, white, 2.0M
81600400	816004	16*10, white, 2.0M
81600600	816006	20*10, white, 2.0M
81600900	816009	30*10, white, 2.0M

Cable trunking without self adhesive

Art.No.	Type	Description/Remark
81600501	816005	16*16, white, 2.0M
81600801	816008	25*15, white, 2.0M
81601001	816010	30*17, white, 2.0M
81601101	816011	35*16, white, 2.0M
81601501	816015	40*17, white, 2.0M
81601301	816013	59*22, White, 2.0M
81601401	816014	60*40, White, 2.0M



Accessories

Cable trunking with self adhesive

Art.No.	Type	Description/Remark
81600500	816005	16*16, white, 2.0M
81600800	816008	25*15, white, 2.0M
81601000	816010	30*17, white, 2.0M
81601100	816011	35*16, white, 2.0M

Accessories for cable trunking

Type	Description(Width*Height)/Remark
816061	12*7
816062	16*10
816063	16*16
816064	20*10
816067	25*15
816068	30*10
816070	35*16

Soft top cable trunking

Art.No.	Type	Description/Remark
81602200	816022	5.5mm, white, 1.0M
81602100	816021	7mm, white, 1.0M
81602000	816020	9mm, white, 1.0M

U type cable trunking

Suitable for snap-on application of single cables (aerial, telephone and electric circuits)

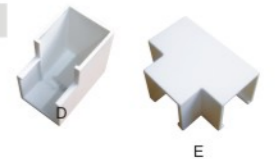
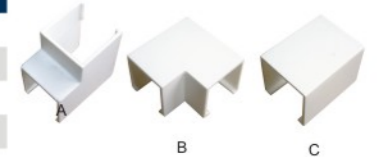
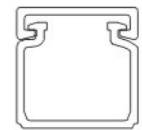
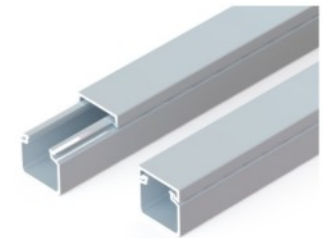
Art.No.	Type	Description/Remark
81603021	816030	2-4mm, White - w/tape, 1.0M
81603121	816031	4-6mm, White - w/tape, 1.0M
81603220	816032	6-8mm, White - w/tape, 1.0M
81603321	816033	8-10mm, White - w/tape, 1.0M

TV trunking

Art.No.	Description(Width*Height)/Remark
51604000	52*18, 1.2m with 4 tap with 6 screw white
81604001	52*18, 1.2m with 4 tap with 6 screw black

Flexible cable trunking

Art.No.	Description(Width*Height)/Remark
8160500	31*10, 2.5m with 3m tap



Accessories

Etman Electrical Tape



1. All-weather, highly flexible, professional grade, self-adhesive PVC electrical tape
2. UL 510 flame retardant
3. CSA 22.2
4. IEC 60454-3-1-7/F-PVCP/90
5. Quick identification of electrical phases, circuits, feeders and branches
6. Primary insulation for splices up to 1000 volts
7. Can be applied at low temperatures
8. Highly resistant to sun, water, oil, acids, corrosive chemicals
9. High UV resistance

Specifications

Thickness: 0.18 mm ± 0.005mm
Tensile Strength: 6.6kg/25mm
Elongation: 200%
Adhesive to Backing: 2.5N/10mm
Adhesive to Steel: 0.34kg/19mm
Voltage: 1000V
Heat: -18°C to +105°C
Dielectric Strength: 45KV/mm
Insulation: YES
Material: PVC
Shelf Life: 5 years
Standards Meet: RoHS
ELV Compliant Dir.Art.4(2): YES
Hazardous goods: NO
Flame Retardant: YES

Type designation:

Type	Description/Remark
81701018	Black
81706018	Red
81703018	Blue
81702018	White
81709118	Brown
81708018	Green/Yellow1

Box of Cable Fixer

Art.No.	Type	Content	Quantity/box
81801010	ETM225S	H03VVH2-F 2x0.75mm ² / 3.5M	1
		ETM019S ,Cable clip round 7-10mm	25
		ETM018S ,Cable clip round 5-7mm	50
		ETM020S ,Cable clip flat 3x10mm	75
		ACS1001, switch	2

Art.No.	Type	Content	Quantity/box
81802010	ETM231S	Clip with glue	7
		Cable fixture with glue	4
		ETM020S ,Cable clip flat 3x10mm	75
		ETM018S ,Cable clip round 5-7mm	50
		ETM019S ,Cable clip round 7-10mm	25
		Bending tape	15
		Terminals 3A-PA66	1
		ACS1001 , Switch	2

Art.No.	Type	Content	Quantity/box
81803010	ETM255S-1	Cable clips white for cable 4-6mm	25
		Tap white	3
		Cable clips white for cable 3-5mm	50
		Cable ties white 8x199mm	20
		Plastic cable clip for wall 31,5x25,5mm white, self-adhesive	4
		Plastic cable clip bxlxh 12x17x8mm white, self-adhesive	10

Art.No.	Type	Content	Quantity/box
81804010	ETM255S-2	Expansion pipe 10*50mm, screw 5x45mm	8
		Expansion pipe 8*40mm, screw 5x35mm	10
		Expansion pipe 7*35mm, screw 4x30mm	14
		Expansion pipe 6*30mm, screw 4x25mm	15
		Expansion pipe 5*25mm, screw 3.5x20mm	15
		Cable tie 3.6*200mm	20

Art.No.	Type	Description/Remark
81803010	ETM226S	box only



Accessories

Cable clip with nail for flat cable(CCF)

Plastic part:

HDPE , Halogen free , UV-stabilized, impact resistant

Metal part:

Electroplated Zinc coated hardened steel

Suitable Applications:

Indoor & outdoor installations, wood & wood fiber boards , cellular concrete

Working temperature: -40°C-80°C

Installation temperature: -20°C-50°C



Type	Size	Colour	Diameter	Length
ETM020S	3x5mm	White	Ø 1.2	17.5
ETM016S	6x9mm	White	Ø 1.5	25
ETM017S	7x10mm	White	Ø 2.0	25

Cable clip with nail for round cable(CCR)

Plastic part:

HDPE , Halogen free , UV-stabilized, impact resistant

Metal part:

Electroplated Zinc coated hardened steel

Suitable Applications:

Indoor & outdoor installations, wood & wood fiber boards , cellular concrete

Working temperature: -40°C-80°C

Installation temperature: -20°C-50°C

Type	Size	Colour	Diameter	Length
ETM020S/2	3-5	White	Ø 1.2	20
ETM256S	4-6	White	Ø 1.2	20
ETM018S	5-7	White	Ø 1.2	20
ETM019S	7-10	White	Ø 1.5	25
ETM019S/1	7-10	White	Ø 1.5	30
ETM257S	8-12	White	Ø 2	25
ETM257S/1	8-12	White	Ø 2	30
ETM257S/2	8-12	White	Ø 2	35
ETM257S/3	8-12	White	Ø 2	45
ETM258S	10-14	White	Ø 2	30
ETM258S/1	10-14	White	Ø 2	35
ETM258S/2	10-14	White	Ø 2	45
ETM259S	14-17	White	Ø 2	30
ETM259SN	14-20	White	Ø 2.2	30
ETM259SN/1	14-20	White	Ø 2.2	35
ETM259SN/2	14-20	White	Ø 2.2	45
ETM260S	18-22	White	Ø 2.2	40
ETM260SN	18-22	White	Ø 2.2	40
ETM260SN/1	18-22	White	Ø 2.2	45
ETM261S	22-26	White	Ø 2.2	40
ETM261SN	22-26	White	Ø 2.2	40
ETM261SN/1	22-26	White	Ø 2.2	45

Type	Size	Colour	Diameter	Length
ETM019S/1	7-10	Black	Ø 1.5	30
ETM258S/1	10-14	Black	Ø 2	35
ETM259SN/1	14-20	Black	Ø 2	35
ETM259SN/2	14-20	Black	Ø 2	45
ETM260SN/1	18-22	Black	Ø 2.2	45
ETM261SN/1	22-26	Black	Ø 2.2	45

Type	Size	Colour	Diameter	Length
ETM020S/1	3-5	Nature	Ø 1.2	16
ETM020S/2	3-5	Nature	Ø 1.2	20
ETM256S	4-6	Nature	Ø 1.2	20
ETM018S	5-7	Nature	Ø 1.2	20



Accessories

Cable clip with screw(CCS)

Plastic part:

HDPE, Halogen free, UV-stabilized, impact resistant

Metal part:

Corrosion class C4, Dacromet coating hardened steel

Suitable Applications:

Indoor & outdoor installations, wood & wood fiber boards, plasterboard, cellular concrete

Working temperature: -40°C-80°C

Installation temperature: -20°C-50°C



Type	Size	Colour	Diameter	Screw print	Total length	Screw length
ETM264S	7-10	White	Ø 5	PH2	40	34.5
ETM265S	8-12	White	Ø 5	PH2	40	34.5
ETM266S	10-14	White	Ø 5	PH2	40	34.5
ETM267S	14-18	White	Ø 5	PH2	40	34.5
ETM268S	18-22	White	Ø 5	PH2	40	34.5
ETM279S	22-26	White	Ø 5	PH2	40	34.5
ETM265S	8-12	Black	Ø 5	PH2	40	34.5
ETM266S	10-14	Black	Ø 5	PH2	40	34.5
ETM267S	14-18	Black	Ø 5	PH2	40	34.5
ETM268S	18-22	Black	Ø 5	PH2	40	34.5
ETM279S	22-26	Black	Ø 5	PH2	40	34.5

Cable clip for concrete

Type	Size	Colour	Diameter	Nail length	Useful nail length
ETM269S	6x3.5mm	White	Ø1.2	11	5

Steel cable clip with nail(SCC)

Nail: Electroplated Zinc coated hardened steel

Clip: Electroplated Zinc coated steel, powder-coated

Suitable Applications:

Indoor & outdoor installations, wood & wood fiber boards, cellular concrete

Working temperature: -40°C-80°C

Installation temperature: -20°C-50°C



Type	Clip sizes	Diameter	Nail length	Suitable tooling type
ETM255S	6-9	Ø 2	25	ETM245S
ETM252S/1	7-10	Ø 2	18	ETM290S
ETM252S	7-10	Ø 2	25	ETM290S
ETM252S/2	7-10	Ø 2	40	ETM290S
ETM254S/1	8-12	Ø 2	18	ETM243S
ETM254S	8-12	Ø 2	25	ETM243S
ETM254S/2	8-12	Ø 2	40	ETM243S
ETM293S	10-14	Ø 2	25	ETM291S
ETM293S/1	10-14	Ø 2	40	ETM291S
ETM294S	14-20	Ø 2	25	ETM292S
ETM294S/1	14-20	Ø 2	40	ETM292S

Accessories

Steel cable clip with screw(SCCS)

Screw: Electroplated Zinc coated hardened steel

Clip: Electroplated Zinc coated steel, powder-coated

Suitable Applications:

Indoor & outdoor installations, wood & wood fiber boards, plasterboard, cellular concrete

Working temperature: -40°C-80°C

Installation temperature: -20°C-50°C

Type	Clip sizes	Diameter	Nail length	Screw length	Suitable tooling type
ETM255S/S	6-9	Ø 2.7	25	15	ETM245S
ETM252S/S	7-10	Ø 2.7	25	15	ETM290S
ETM254S/S	8-12	Ø 2.7	25	15	ETM243S
ETM293S/S	10-14	Ø 2.7	25	15	ETM291S
ETM294S/S	14-20	Ø 2.7	25	15	ETM292S

Half white staples(HWS)

Electroplated Zinc coated hardened steel, paint

Corrosion class C4

Suitable Applications: Indoor & outdoor installations, wood & wood fiber boards, cellular concrete

Working temperature: -40°C-80°C

Installation temperature: -20°C-50°C

Type	For pipes	Nail length (mm)	Thickness
82109000	8	16	1.0
82109100	10	16	1.0
82109001	8	25	1.0
82109101	10	25	1.0
82109002	8	12	1.0

Metal double staples(MDS)

Electroplated Zinc coated hardened steel

Corrosion class C4

Suitable Applications: Indoor & outdoor installations, wood & wood fiber boards, cellular concrete

Working temperature: -40°C-80°C

Installation temperature: -20°C-50°C

Type	For pipes	Nail length (mm)	Thickness
82109200	16	16	1.0
82109300	20	20	1.5
82109400	27	32	1.5
82109500	25	30	1.5
82109600	32	35	1.5



Accessories

Double white staples(DWS)

Electroplated Zinc coated hardened steel, paint corrosion class C4

Suitable Applications: Indoor & outdoor installations, & wood & wood fiber boards, & cellular concrete

Working temperature: -40°C-80°C

Installation temperature: -20°C-50°C



Type	For pipes	Nail length (mm)	Thickness
82109700	8	16	1.0
82109800	10	16	1.0
82109900	12	16	1.0

Half white staples dedicated to gypsum (HSG)

Electroplated Zinc coated steel, paint corrosion class C4

Suitable Applications: Indoor & outdoor installations, & plasterboard

Working temperature: -40°C-80°C

Installation temperature: -20°C-50°C



Type	For pipes	Nail length (mm)	Thickness
82100200	8-12	13	1.0
82100300	5-7	13	1.0

Simple long cable clips with nail and plug, Nature(SCP)

Plastic part: HDPE, Halogen free,UV-stabilized, impact resistant

metal part: corrosion class C4, Dacromet coating hardened steel

Suitable Applications Bearing force: Indoor & outdoor installations, wood & wood fiber boards(10kg), solid concrete (10kg), cellular concrete (5kg)

Working temperature: -40°C-80°C

Installation temperature: -20°C-50°C



Type	Clip sizes	Nail length(mm)	Nail diameter(mm)	Plug Diameter	Plug length(mm)	For Drilling
82002000	16-19 or 16-20	40	2.5	Ø 5.5	23	5.5
82002100	19-22 or 20-22	40	2.5	Ø 5.5	23	5.5

Accessories

Double long cable clips with nail and plug, Nature (DCP)

Plastic part: HDPE. Halogen free, UV-stabilized, impact resistant

metal part: Corrosion class C4, Dacromet coating hardened steel

Suitable Applications Bearing force: Indoor & outdoor installations, wood & wood fiber boards(10kg), solid concrete (10kg), cellular concrete (5kg)

Working temperature: -40°C-80°C

Installation temperature: -20°C-50°C



Type	Clip sizes	Nail length(mm)	Nail diameter(mm)	Plug diameter	Plug length(mm)	For Drilling
82002200	16-19 or 16-20	40	Ø 2.5	Ø 5.5	23	Ø 5.5
82002300	19-22 or 20-22	40	Ø 2.5	Ø 5.5	23	Ø 5.5

Plastic Cable clip(PCC)

Plastic part: HDPE. Halogen free, UV-stabilized, impact resistant

Suitable Applications: Indoor & outdoor installations

Working temperature: -40°C-80°C

Installation temperature: -20°C-50°C

Type	Clip sizes	Colour	Recommended mounting screw size	
			machine thread screw	Self-tapping screw(mm)
82003000	3-5	White	M4	Ø 5
82003100	5-7	White	M4	Ø 5
82003200	7-10	White	M5	Ø 5
82003300	10-14	White	M5	Ø 5
82003400	14-20	White	M6	Ø 6
82003500	20-26	White	M6	Ø 6



Stainless cable clip, round

Stainless steel

corrosion class C4

Plastic part: HDPE. Halogen free, UV-stabilized, impact resistant

Suitable Applications: Indoor & outdoor installations

Working temperature: -40°C-80°C

Installation temperature: -20°C-50°C

Single(SCCS)

Type	Clip sizes(mm)
82201000	10
82201100	12
82201200	14
82201300	16



Single(SCCS)

Double(SCCD)

Type	Clip sizes(mm)
82201400	16
82201500	20



Double(SCCD)

B series

Flush-type wall rocker switch for fixed installation, screw terminal



B201,B352



B202



B203



B204,B351



B214P

Technical Data: 16AX 250VAC

IP-Class: IP20

Certificate(s): CE, Semko

Technical info:

Wiring diagram printed on the rear side.

Thermoplastic in the rocker and cover plate.

Screw terminals.

Flush wiring.

Fit into wall boxes, screw distance cc 60 mm -cover plate cc 84 mm.

Type	Description/Remark
B201	1 pole / 2-way, pattern No. 1/6
B202	2-pole , pattern No. 2
B203	1+2-pol , pattern No. 1+2
B204	1 pole and 2-way , pattern No. 5
B351	2 pole and 2-way , pattern No. 6+6
B352	Reversing switch, pattern No. 7

B series

Single way Flush-type wall socket outlet for fixed installation, screw terminal

Technical Data: 16AX 250VAC

IP-Class: IP20

Certificate(s): Semko

Technical info:

Socket outlet with thermoplastic cover. Screw (Pozidriv) terminals socket base, flush wiring. With shutter.

Thermoplastic center plate 55X55 mm, which fits into "B" series combination plate

Special house (B240) for single socket outlets - used when flush mounting cable installation enters as surface mounting, covering the flush box, may be used.

There have one screw in the cover plate.

Fit into wall boxes, screw distance cc 60 mm



B207

Type	Description/Remark
B207	1-way socket , earthed

Double way Flush-type wall socket outlet for fixed installation, screw terminal

Technical Data: 16AX 250VAC

IP-Class: IP20

Certificate(s): Semko

Technical info:

Socket outlet with thermoplastic cover. Screw (Pozidriv) terminals socket base, flush wiring. With shutter.

There have two screws in the cover plate.

Fit into wall boxes, screw distance cc 60 mm



B246

Type	Description/Remark
B246	2-way socket , without earth
B022	2-way socket , earthed



B022

B series

Triple way Flush-type wall socket outlet for fixed installation, screw terminal



B401

Technical Data: 16AX 250VAC
IP-Class: IP20
Certificate(s): Semko
Technical info:
 Socket outlet with thermoplastic cover. Screw (Pozidriv) terminals socket base, flush wiring. With shutter. There have two screws in the cover plate.
 Fit into wall boxes, screw distance cc 60 mm
 Special house (B400) - used when mounting on corner of wall, may be used.

Type	Description/Remark
B401	3-way socket , with earth

One way Flush-type wall socket outlet for fixed installation, screw terminal



B20944

Technical Data: 16AX 250VAC
IP-Class: IP44
Certificate(s): Semko
Technical info:
 Socket outlet with thermoplastic cover. Screw (Pozidriv) terminals socket base, flush wiring. With shutter. Thermoplastic center plate 55X55 mm, which fits into "B" series combination plate, but only reach Ip20.
 Special house (B240) for single socket outlets - used when flush mounting cable installation enters as surface mounting, covering the flush box, may be used.
 There have one screw in the cover plate.
 Fit into wall boxes, screw distance cc 60 mm

Type	Description/Remark
B20944	1-way socket , earthed, Ip44

B series

Coaxial outlets

Technical Data: 75 ohm, 7 dB
IP-Class: IP20
Technical info: Flush mounted
 Special house (B240) for coaxial outlets - used when flush mounting cable installation enters as surface mounting, covering the flush box, may be used
 There have single screw (Pozidriv) in the cover plate
 Fit into wall boxes, screw distance cc 60 mm
 With end terminator (75 ohm)
 Thermoplastic center plate 55X55 mm, which fits into "B" series combination plate

Type	Description/Remark
B213	TV/Radio
B215	TV/Radio/Satellite
B213W	Without unit
B215W	Without unit



B213



B215



End Terminator

B series

Telephone & Network Socket Panel without modular jacks, for Keystone modular



B211WB

Technical Data: Cat 5e or Cat 6
IP-Class: IP20
Technical info:
 Flush mounted system with modular outlets, fit modular 8 Categories 5e or Categories 6, RJ45, UTP.
 Special house (B240) for modular outlets - used when as surface mounting, covering the flush box, may be used
 Fit into wall boxes, screw distance cc 60 mm
 Thermoplastic center plate 55X55 mm, which fits into "B" series combination plate
 With dust cover.
 Non-screw cover plate.
 The refs with "R" means red plastic is for the "Big" keystone (14.6x19.8) and "B" means black plastic is for "Small" keystone (15.6x19.2). Not much differences, but enough to make also smaller Keystone versions like Gigamedia, Eurolan etc.

Type	Description/Remark
B211WR	1xRJ45 dust-cover. Keystone size 14.6x19.8
B211WB	1xRJ45 dust-cover. Keystone size 14.6x19.2

Telephone & Network Socket Panel without modular jacks, for Keystone modular

Technical Data: Cat 5e or Cat 6
IP-Class: IP20
Technical info: Flush mounted system with modular outlets,
 Special house (ETM240P) for modular outlets - used when flush mounting cable installation enters as surface mounting, covering the flush box, may be used
 There have single screw (Pozidriv) in the cover plate
 Fit into wall boxes, screw distance cc 60 mm
 Thermoplastic center plate 55X55 mm, which fits into "B" series combination plate
 With Stuffer Cup (made by transparent PC)
 With shutter
 2 x 8 Categories 5e or Categories 6, RJ45, UTP

Type	Description/Remark
B210W	2 x RJ45

Cat6 UTP Tool-Free Keystone Modular

Comply with TIA/EIA-568-B.2-1 requirements
 Tool Free
 Adapt for 22-26AWG cable
IDC Life: Termination>200 times
Jack Life: Insertion>750 times
 UL and ETL approved
Contact material: Phosphor Bronze+Glod Plating 50µm
 Transmission bandwidth 250MHz

Type	Description/Remark
CAT6JACKTJS180	Toolless Keystone CAT6 RJ45 connector. UTP / Unshielded



B210, B210-1



CAT6JACKTJS180

Telephone & Network Socket Panel without modular jacks, for LexCom modular

Technical Data: Cat 5e or Cat 6
IP-Class: IP20
Technical info: This product is used to be able to mount the LexCom modular to our combination plate.
 Flush mounted system without modular outlets,
 Special house (B240) for modular outlets - used when flush mounting cable installation enters as surface mounting, covering the flush box, may be used
 There have two screws (Pozidriv) in the cover plate
 Fit into wall boxes, screw distance cc 60 mm
 Thermoplastic center plate 55X55 mm, which fits into "B" series combination plate

Type	Description/Remark
B210W-L	2 x LexCom



B210W-L

B series

Dimmer

Technical Data: 230VAC
IP-Class: IP20

Technical info: The dimmers fit into standard wall boxes from ETMAN (cc 60mm) and in "B" series combination plates. By surface fixing, please use surface house (Typed B240). By surface fixing, in combination with a switch or other regulators/dimmers, please use double surface house (Typed B429). It is easy to rebuild into the coloured Creative line solutions, either as flush - or surface mounted by removing plastic parts.



Type	B328V1	B208V1	B321V1	B327	B321V2
Leading or Trailing	Leading	Trailing	Trailing	Leading+Trailing	Trailing
Wiring	2 way	2 way	2 way	1 way	2 way
Nature	-	-	-	needed	-
Incandescent lamps	25-315W	25-315W	25-315W	4-400W	25-315W
230 V halogen lamps	25-315W	25-315W	25-315W	4-400W	25-315W
LV halogen lamps with Dimmable conventional transformers (iron core)	25-315VA	-	-	4-400VA	-
LV halogen lamps with electronic transformer	-	25-315VA	25-315VA	4-400VA	25-315VA
LED lamps (leading edge)	25-150VA	-	-	4-40VA	-
LED lamps (trailing edge)	-	25-150VA	25-150VA	4-200VA	25-150VA
LED filament	-	-	-	4-200VA	-
Micro-adjustment	-	MAX	MIN	-	MIN
Leading and trailing adjustment	-	-	-	With	-
Claw function	-	-	-	-	With
Adjustments possible just by taking away the knob	-	-	-	-	Yes

ZigBee Box Dimmer

Technical Data: 100 -230VAC, Radio Frequency 2,4Ghz, ZigBee 3.0
IP-Class: IP20

Technical info:

The dimmer is for indoor use only.
The dimmer can be installed in normal wall boxes, controlled by one or more push buttons, or wireless ZigBee system.
Short press on push- button is ON/OFF, long press on button is rising/lowering

the brightness, every second key push rising and every second time key push

lowering.

The lamp stops at highest/lowest brightness.

We recommend using Philips hue app and Philips hue Router.

Neutral conductor: Required



SR-ZG9101SAC-HP

Type	Description/Remark
SR-ZG9101SAC-HP	ZigBee Box Dimmer 200W LED

Flush-type electronic timer for fixed installation

Technical Data:

Maximum current 10A

Effect:

Resistive 2500W (cosΦ=1)

RL 360VA / 360W×cosΦ

RC 250VA / 260W×cosΦ

IP-Class: IP20

Technical info:

Time duration in hours: 5MIN; 10MIN; 15MIN; 30MIN; 1H; 2H; 4H; 8H

Electronic timer switch for 2-poles switching of electrical appliances.

For safety, the electric time switch switches off the electrical appliances connected to it after a selected timer interval. The practical application area is the connection of heat producing appliances, for example coffee machines, heating blanket, etc....

The switch-off timer is set to suit the usage time of the specific connected appliance ("time" rotary switch on the unit).

The timers fit into standard wall boxes from ETMAN (c-c 60mm). By surface fixing, please use surface house (Typed B240). By surface fixing, in combination with a switch or other regulators/dimmers, please use double surface house (Typed B429). It is easy to rebuild into the colored creative line solutions, regardless of flush or surface mounted by removing plastic parts.

Thermoplastic center plate is 55X55 mm, which fits into Etman "B" series combination plate.

Screw terminal.



B620

Type	Description/Remark
B620	Electronic time switch

Thermostat without display

IP-Class: IP21

Certificate(s): Semko

Technical Info: 230VAC 16A

Frequency: 50Hz

Load type:

Resistive load: 16A 250VAC (AC1)

Product information:

Fit into standard wall boxes (c-c 60mm). By surface fixing, please use surface house (Typed ETM240P).

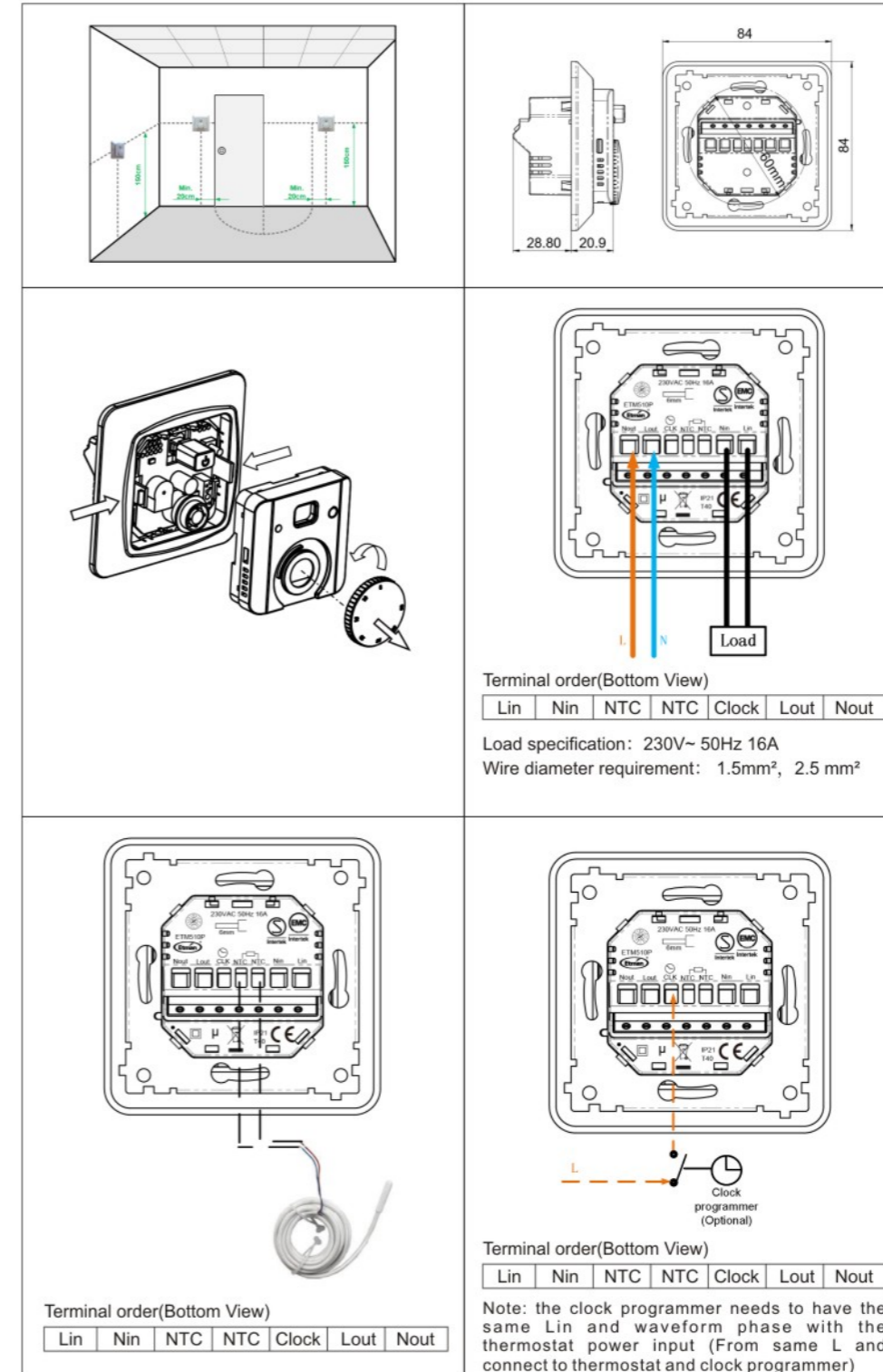
By surface fixing, in combination with a switch or others, please use double surface house (Typed ETM429P).

Thermoplastic center plate 55X55 mm, which fits into Etman "P" series combination plate.

Product Data:

Measuring accuracy	±0,1°C
Operating temperature	0°C – 40°C
Setting temperature range	+5°C to 35°C
Floor limiting temperature	28°C
Regulation characteristics	PID algorithm
Electrical protection	IP21 Class II
Main switch	16A Two poles 16A
Output	16A 250VAC(AC1) Relay 16A 250VAC resistive load(Ac1)
Power supply	230VAC ± 10%
External sensor	NTC 10k Ω 25°C
Load	cos φ = 1
Max. length sensor cable	50 m, 2x1.5 mm ²

Type	Description/Remark
B510	Thermostat without display



Flush-type USB Charger for fixed installation



Technical Data:

Input:

230VAC 50Hz

200mA Max

Output:

DC 5V 3.4A

IP-Class: IP20

Technical info:

USB Charger makes it possible to charge rechargeable batteries of electronic devices such as mobile phones, iPad, iPod, iPhone or similar products, with the charging process taking place exclusively via USB connection.

Two vertical parallel arranged USB jack 2.0 Type A.

An auto-detect feature monitors USB data line voltage, and automatically provides the correct electrical output (max2.4A) on the USB ports to charge compliant devices.

2 x 1A, 2.1A+1A, 2.4A+1A; 5V.

USB Charger fit into standard wall boxes from Etman (c-c 60mm). By surface fixing, please use surface house (Typed B240).

By surface fixing, in combination with a switch or others, please use double surface house (Typed B429).

Thermoplastic center plate is 55X55 mm, which fits into Etman "B" series combination plate.

Screw terminal, capacity: 1.5-2.5mm².

No visible screws.

Only suitable for use in indoor areas.

Built-in protection circuit.

Type	Description/Remark
B702	3.4A USB Charger

Schuko Outlet with 2 USB ports



IP-Class: IP20

Socket Data: 16A/250 ~, 50Hz MAX 3600W

USB Data:

Rated input: 230V~, 50Hz, 0.4A

Rated output: Output Single A-port or Output Single C-port:

5.0V3.0A, 15.0W;

9.0V2.0A, 18.0W;

12.0V1.5A, 18.0W;

Output A-port + Output C-port:

5.0V3.0A, 15.0W (3.0A in total);

Characteristics

Equipped with Smart IC (intelligent device detection for optimal charging current), output overcurrent limiting, output overvoltage protection. The USB sockets are only for power supply. Data transfer does not take place.

USB Charger fit into standard wall boxes from Etman (c-c 60mm). By surface fixing, please use surface house (Typed B240).

By surface fixing, in combination with a switch or others, please use double surface house (Typed B429).

Thermoplastic center plate is 55X55 mm, which fits into Etman "B" series combination plate.

Screw terminal, capacity: 1.5-2.5mm².

Only suitable for use in indoor areas.

Built-in protection circuit.

Type	Description/Remark
B703Q	Wall-Adapter, USB Power Output Ports

Flush type RCCB socket for fixed installation

Technical Data:

Rated voltage: 230VAC 50Hz

Rated current: 16A

$I_{\Delta n} \leq 30mA$

$I_{\Delta n} = I_{nc} = 1500A$, type A

Trip time $\leq 30ms$

Poles No.: 1P+N

IP-Class: IP44 (with mounting on level surface)

Technical info:

The working principle of the safety socket outlets is the same as that of a residual current device.

The fault current protection related all devices and cables which are connected to the safety socket outlet.

Flush type.

Suitable for using in indoor and outdoor areas.

Rewirable, Screwless terminal, capacity: 1.5-2.5mm², the length of insulation to be removed is 12mm.

With shutter.

With plastic frame and cover, with a self-closing water proof lid.

Class I

"T" is marked on the test button and "R" is marked on the reset button.



Type	Description/Remark
B209Q44R	RCCB Socket, Schuko type, 30mA, Ip44

Combination plate

All standard 55x55 mm central plate equipment will fit into the combination plate.

Switches need in addition a locking frame to fasten the combination plate to the switch-base.

Type	Description/Remark
B262	Single way frame
B205	Double way frame
B206	Three way frame
B234	four way frame



Spring, Ø3.25 *10mm

The spring is used to mounting in insert of our normal switches work as push button.

Type	Description/Remark
B492	Spring, Ø3.25*10mm



Surface-type wall socket outlet for fixed installation, screw terminals



B1010



B1011

Technical Data: 16A 250VAC

IP-Class: IP20

Certificate(s): CE, Semko

Technical info:

Surface mounted socket outlets with or without earth (schuko), with shutter, screw terminal. Covering cap made of thermoplastic, which is less rigid but more durable than thermo-setting plastic. Inclusive a back plate, on to which the socket insert is fixed. Roomy space for cables under the broader covering cap. Fixing screw-holes in the back plate for the surface mounting, Screw distance cc 38 mm.

Type	Description/Remark
B1010	1-way socket , without earth
B1011	1-way socket , earthed

Surface-type wall socket outlet for fixed installation, screw terminals



B2010



B2011

Technical Data: 16A 250VAC

IP-Class: IP20

Certificate(s): CE, Semko

Technical info:

Surface mounted socket outlets with or without earth (schuko), with shutter, screw terminal. Covering cap made of thermoplastic, which is less rigid but more durable than thermo-setting plastic. Inclusive a back plate, on to which the socket insert is fixed. Roomy space for cables under the broader covering cap. Fixing screw-holes in the back plate for the surface mounting, Screw distance cc 38 mm.

Type	Description/Remark
B2010	2-way socket , without earth
B2011	2-way socket , earthed

Surface-type wall socket outlet for fixed installation, screw terminals



B241

Technical Data: 16A 250VAC

IP-Class: IP20

Certificate(s): CE, Semko

Technical info:

Surface mounted socket outlets with or without earth (schuko), with shutter, screw terminal. Covering cap made of thermoplastic, which is less rigid but more durable than thermo-setting plastic. Inclusive a back plate, on to which the socket insert is fixed. Roomy space for cables under the broader covering cap. Fixing screw-holes in the back plate for the surface mounting, Screw distance cc 38 mm.

Type	Description/Remark
B241	4-way socket , earthed

Surface-type corner of wall Socket for fixed installation

Technical Data: 16A 250VAC

IP-Class: IP20

Certificate(s): Semko

Technical info:

Surface mounted socket outlets with earth (Schuko) for corner of wall, with shutter, screw terminal. Covering cap made of thermoplastic, which is less rigid but more durable than thermo-setting plastic. Inclusive a back plate, on to which the socket insert is fixed. Roomy space for cables under the broader covering cap. Fixing screw-holes in the back plate for the surface mounting.

Type	Description/Remark
B400	3 way Schuko socket for corner of wall



B series

Surface-type wall rocker switch for fixed installation, screw terminals



B221,B342



B222



B223



B224,B341



B344P

Technical Data: 16AX 250VAC

IP-Class: IP20

Certificate(s): CE, Semko,

Technical info: Wiring diagram printed on the rear side. Thermoplastic in the rocker and cover plate.

Screw terminals. Flush wiring.

Screw distance cc 38 mm -cover plate cc 73 mm.

Space enough for cables up to 2.5 mm under the cover plate.

Base bottom plate acts at same time as a positioning guide by the door frame under installation.

Type	Description/Remark
B221	1 pole / 2-way, pattern No. 1/6
B222	2-pole , pattern No. 2
B223	1+2-pol , pattern No. 1+2
B224	1 pole and 2-way , pattern No. 5
B341	2 pole and 2-way , pattern No. 6+6
B342	Reversing switch, pattern No. 7

B series

Socket outlet and plug for oven, Norwegian model

Technical Data: 25A 250VAC

IP-Class: IP20

Max. Ambient temp.: 45°C

Certificate(s): Semko

Technical info:

3 flat-pin system

Socket outlet: surface type, 2P+E, with thermoplastic cover. Screw (Pozidriv) terminals socket base, flush wiring. Screw distance 66.70x37.0 mm -cover plate 90x91 mm. also can fit into wall boxes, screw distance cc 60 mm

Plug: 2P+E, with screw type terminals, straight cable entry.

Type	Description/Remark
B229	Rewirable Plug, white
B230	Wall Socket for fixed installation, surface type



B229



B230

Socket outlet and plug for oven, Swedish model

Technical Data: 16A 230/400VAC

IP-Class: IP20

Certificate(s): Semko

Technical info:

Normal peoples called them "Perilex" plug and socket. The plus and socket are equipped with protective earth (PE), a neutral conductor (N) and three phase conductors (L1, L2, L3; formerly: R, S, T).

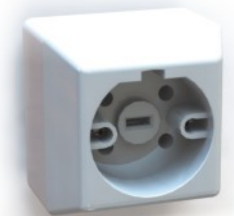
Usage of the "Perilex" plug and socket is usually confined to small businesses (e.g. bakeries, restaurants), medical facilities (hospitals, laboratories) and homes (for electric stoves), where it has the advantage of a smaller form factor and better cleanability.

B422: surface type wall socket, with thermoplastic cover. Screw (Pozidriv) terminals socket base, for flush wiring 1.5-2.5mm² only. Screw distance 49 mm -cover plate 67x67 mm.

B420: flush type wall socket, with thermoplastic cover. Screw (Pozidriv) terminals socket base, for flush wiring 1.5-2.5mm² only. Fit into flush junction boxes, screw distance cc 67 mm

B421: Plug, rewirable, with pillar type terminals, for all kind of wire, connectable wire area 1.5-2.5mm², side cable entry.

Type	Description/Remark
B422	Socket, Surface type
B420	Socket, Flush type
B421	Plug, rewirable



B422



B420



B421

U series

Flush-type wall rocker switch for fixed installation, screw terminal



U201,U352



U202



U203



U204,U351



U214P

Technical Data: 16AX 250VAC

IP-Class: IP20

Certificate(s): CE, Semko

Technical info:

Wiring diagram printed on the rear side.

Thermoplastic in the rocker and cover plate.

Screw terminals.

Flush wiring.

Fit into wall boxes, screw distance cc 60 mm -cover plate cc 84 mm.

Type	Description/Remark
U201	1 pole / 2-way, pattern No. 1/6
U202	2-pole , pattern No. 2
U203	1+2-pol , pattern No. 1+2
U204	1 pole and 2-way , pattern No. 5
U351	2 pole and 2-way , pattern No. 6+6
U352	Reversing switch, pattern No. 7
U353	3 gang , pattern No. 1+1+1

Single way Flush-type wall socket outlet for fixed installation, screw terminal

Technical Data: 16A 250VAC

IP-Class: IP20

Certificate(s): Semko

Technical info:

Socket outlet with thermoplastic cover. Screw (Pozidriv) terminals socket base, flush wiring. With shutter.

Thermoplastic center plate 55X55 mm, which fits into "U" series combination plate

Special house (B240) for single socket outlets - used when flush mounting cable installation enters as surface mounting, covering the flush box, may be used.

There have one screw in the cover plate.

Fit into wall boxes, screw distance cc 60 mm



U207

Type	Description/Remark
U207	1-way socket , earthed

Double way Flush-type wall socket outlet for fixed installation, screw terminal

Technical Data: 16A 250VAC

IP-Class: IP20

Certificate(s): Semko

Technical info:

Socket outlet with thermoplastic cover. Screw (Pozidriv) terminals socket base, flush wiring. With shutter.

There have two screws in the cover plate.

Fit into wall boxes, screw distance cc 60 mm



U246

Type	Description/Remark
U246	2-way socket , without earth
U022	2-way socket , earthed



U022

Double way Flush-type wall socket outlet for fixed installation, Low profile, screw terminal

Technical Data: 16A 250VAC

IP-Class: IP20

Certificate(s): Semko

Technical info:

Socket outlet with thermoplastic cover. Screw (Pozidriv) terminals socket base, flush wiring. With shutter.

There have two screws in the cover plate.

Fit into 1.5 way wall boxes, screw distance cc 60 mm



U022L

Type	Description/Remark
U022L	2-way socket , earthed

U series

Triple way Flush-type wall socket outlet for fixed installation, screw terminal



Technical Data: 16A 250VAC
IP-Class: IP20
Certificate(s): Semko
Technical info:
 Socket outlet with thermoplastic cover. Screw (Pozidriv) terminals socket base, flush wiring. With shutter.
 There have two screws in the cover plate.
 Fit into wall boxes, screw distance cc 60 mm
 Special house (B400) - used when mounting on corner of wall, may be used.

Type	Description/Remark
U401	3-way socket , with earth

One way Flush-type wall socket outlet for fixed installation, screw terminal



Technical Data: 16A 250VAC
IP-Class: IP44
Certificate(s): Semko
Technical info:
 Socket outlet with thermoplastic cover. Screw (Pozidriv) terminals socket base, flush wiring. With shutter. Thermoplastic center plate 55X55 mm, which fits into "U" series combination plate, but only reach Ip20.
 Special house (B240) for single socket outlets - used when flush mounting cable installation enters as surface mounting, covering the flush box, may be used.
 There have one screw in the cover plate.
 Fit into wall boxes, screw distance cc 60 mm

Type	Description/Remark
U20944	1-way socket , earthed, Ip44



U series

Coaxial outlets

Technical Data: 75 ohm, 7 dB
IP-Class: IP20
Technical info:
 Flush mounted
 Special house (U240) for coaxial outlets - used when flush mounting cable installation enters as surface mounting, covering the flush box, may be used
 There have single screw (Pozidriv) in the cover plate
 Fit into wall boxes, screw distance cc 60 mm
 With end terminator (75 ohm)
 Thermoplastic center plate 55X55 mm, which fits into "U" series combination plate

Type	Description/Remark
U213	TV/Radio
U215	TV/Radio/Satellite
U213W	Without unit
U215W	Without unit



U213



U215



End Terminator

U series

Telephone & Network Socket Panel without modular jacks, for Keystone modular

Technical Data: Cat 5e or Cat 6

IP-Class: IP20

Technical info:

Flush mounted system with modular outlets, fit modular 8 Categories 5e or Categories 6, RJ45, UTP.
 Special house (B240) for modular outlets - used when as surface mounting, covering the flush box, may be used
 Fit into wall boxes, screw distance cc 60 mm
 Thermoplastic center plate 55X55 mm, which fits into "U" series combination plate
 With dust cover.
 Non-screw cover plate.
 The refs with "R" means red plastic is for the "Big" keystone (14.6x19.8) and "B" means black plastic is for "Small" keystone (15.6x19.2). Not much differences, but enough to make also smaller Keystone versions like Gigamedia, Eurolan etc.



Type	Description/Remark
U211WR	1xRJ45 dust-cover. Keystone size 14.6x19.8
U211WB	1xRJ45 dust-cover. Keystone size 14.6x19.2

Telephone & Network Socket Panel without modular jacks, for Keystone modular

Technical Data: Cat 5e or Cat 6

IP-Class: IP20

Technical info:

Flush mounted system with modular outlets,
 Special house (U240) for modular outlets - used when flush mounting cable installation enters as surface mounting, covering the flush box, may be used
 There have single screw (Pozidriv) in the cover plate
 Fit into wall boxes, screw distance cc 60 mm
 Thermoplastic center plate 55X55 mm, which fits into "U" series combination plate
 With Stuffer Cup (made by transparent PC)
 With shutter
 2 x 8 Categories 5e or Categories 6, RJ45, UTP



U210, U210-1

Type	Description/Remark
U210W	2 x RJ45

Cat6 UTP Tool-Free Keystone Modular

Comply with TIA/EIA-568-B.2-1 requirements

Tool Free

Adapt for 22-26AWG cable

IDC Life: Termination>200 times

Jack Life: Insertion>750 times

UL and ETL approved

Contact material: Phosphor Bronze+Gold Plating 50µm

Transmission bandwidth 250MHz



Type	Description/Remark
CAT6JACKTJS180	Toolless Keystone CAT6 RJ45 connector. UTP / Unshielded

U series

Telephone & Network Socket Panel without modular jacks, for LexCom modular

Technical Data: Cat 5e or Cat 6

IP-Class: IP20

Technical info:

This product is used to be able to mount the LexCom modular to our combination plate.
 Flush mounted system without modular outlets,
 Special house (U240) for modular outlets - used when flush mounting cable installation enters as surface mounting, covering the flush box, may be used
 There have two screws (Pozidriv) in the cover plate
 Fit into wall boxes, screw distance cc 60 mm
 Thermoplastic center plate 55X55 mm, which fits into "U" series combination plate



Type	Description/Remark
U210W-L	2 x LexCom

U series

Flush-type dimmer for fixed installation

Technical Data: 250VAC

IP-Class: IP20

Technical info:

The dimmers fit into standard wall boxes from ETMAN (cc 60mm) and in "U" series combination plates. By surface fixing, please use surface house (Typed U240). By surface fixing, in combination with a switch or other regulators/dimmers, please use double surface house (Typed U429). It is easy to rebuild into the coloured Creative line solutions, either as flush - or surface mounted by removing plastic parts.



Type	U328V1	U208V1	U321V1	U327	U321V2
Leading or Trailing	Leading	Trailing	Trailing	Leading+Trailing	Trailing
Wiring	2 way	2 way	2 way	1 way	2 way
Nature	-	-	-	needed	-
Incandescent lamps	25-315W	25-315W	25-315W	4-400W	25-315W
230 V halogen lamps	25-315W	25-315W	25-315W	4-400W	25-315W
LV halogen lamps with Dimmable conventional transformers (iron core)	25-315VA	-	-	4-400VA	-
LV halogen lamps with electronic transformer	-	25-315VA	25-315VA	4-400VA	25-315VA
LED lamps (leading edge)	25-150VA	-	-	4-40VA	-
LED lamps (trailing edge)	-	25-150VA	25-150VA	4-200VA	25-150VA
LED filament	-	-	-	4-200VA	-
Micro-adjustment	-	MAX	MIN	-	MIN
Leading and trailing adjustment	-	-	-	With	-
Claw function	-	-	-	-	With
Adjustments possible just by taking away the knob	-	-	-	-	Yes

U series

ZigBee Box Dimmer

Technical Data: 100 -230VAC, Radio Frequency 2,4Ghz, ZigBee 3.0

IP-Class: IP20

Technical info:

The dimmer is for indoor use only.

The dimmer can be installed in normal wall boxes, controlled by one or more push buttons, or wireless ZigBee system.

Short press on push- button is ON/OFF, long press on button is rising/lowering the brightness, every second key push rising and every second time key push lowering.

The lamp stops at highest/lowest brightness.

We recommend using Philips hue app and Philips hue Router.

Neutral conductor: Required

Type	Description/Remark
SR-ZG9101SAC-HP	ZigBee Box Dimmer 200W LED



ZigBee Box Dimmer

Technical Data:

Maximum current: 10A

Effect:

Resistive 2500W (cosΦ=1)

RL 360VA / 360W×cosΦ

RC 250VA / 260W×cosΦ

IP-Class: Ip20

Technical info:

Time duration in hours: 5MIN; 10MIN; 15MIN; 30MIN; 1H; 2H; 4H; 8H

Electronic timer switch for 2-poles switching of electrical appliances.

For safety, the electric time switch switches off the electrical appliances connected to it after a selected timer interval. The practical application area is the connection of heat producing appliances, for example coffee machines, heating blanket, etc....

The switch-off timer is set to suit the usage time of the specific connected appliance ("time" rotary switch on the unit).

The timers fit into standard wall boxes from ETMAN (c-c 60mm). By surface fixing, please use surface house (Typed B240). By surface fixing, in combination with a switch or other regulators/dimmers, please use double surface house (Typed B429). It is easy to rebuild into the colored creative line solutions, regardless of flush or surface mounted by removing plastic parts.

Thermoplastic center plate is 55X55 mm, which fits into Etman "U" series combination plate.

Screw terminal.

Type	Description/Remark
U620	Electronic time switch



U series

Thermostat without display

IP-Class: IP21

Certificate(s): Semko

Technical Info: 230VAC 16A

Frequency: 50Hz

Load type:

Resistive load: 16A 250VAC (AC1)

Product information:

Fit into standard wall boxes (c-c 60mm). By surface fixing, please use surface house (Typed ETM240P).

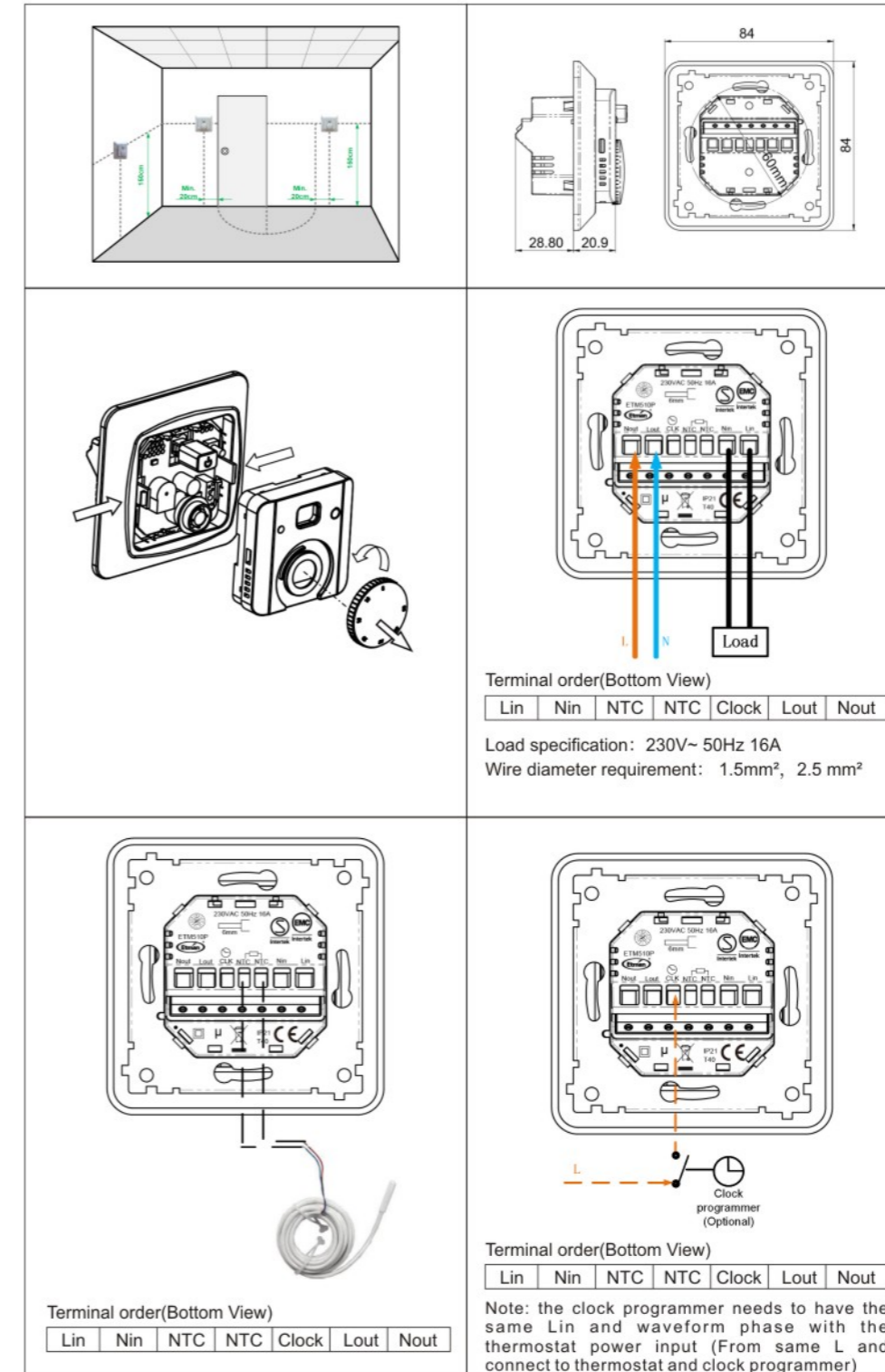
By surface fixing, in combination with a switch or others, please use double surface house (Typed ETM429P).

Thermoplastic center plate 55X55 mm, which fits into Etman "P" series combination plate.

Product Data:

Measuring accuracy	±0,1°C
Operating temperature	0°C – 40°C
Setting temperature range	+5°C to 35°C
Floor limiting temperature	28°C
Regulation characteristics	PID algorithm
Electrical protection	IP21 Class II
Main switch	16A Two poles 16A
Output	16A 250VAC(AC1) Relay 16A 250VAC resistive load(Ac1)
Power supply	230VAC ± 10%
External sensor	NTC 10k Ω 25°C
Load	cos φ = 1
Max. length sensor cable	50 m, 2x1.5 mm ²

Type	Description/Remark
U510	Thermostat without display



Flush-type USB Charger for fixed installation**Technical Data:**

Input:

230VAC 50Hz

200mA Max

Output:

DC 5V 3.4A

IP-Class: IP20**Technical info:**

USB Charger makes it possible to charge rechargeable batteries of electronic devices such as mobile phones, iPad, iPod, iPhone or similar products, with the charging process taking place exclusively via USB connection.

Two vertical parallel arranged USB jack 2.0 Type A.

An auto-detect feature monitors USB data line voltage, and automatically provides the correct electrical output (max2,4A) on the USB ports to charge compliant devices.

2 x 1A, 2.1A+1A, 2.4A+1A; 5V.

USB Charger fit into standard wall boxes from Etman (c-c 60mm). By surface fixing, please use surface house (Typed B240).

By surface fixing, in combination with a switch or others, please use double surface house (Typed B429).

Thermoplastic center plate is 55X55 mm, which fits into Etman "B" series combination plate.

Screw terminal, capacity: 1.5-2.5mm².

No visible screws.

Only suitable for use in indoor areas.

Built-in protection circuit.



Type	Description/Remark
U702	3.4A USB Charger

Schuko Outlet with 2 USB ports**IP-Class:** IP20**Socket Data:** 16A/250 ~, 50Hz MAX 3600W**USB Data:****Rated input:** 230V~, 50Hz, 0.4A**Rated output:** Output Single A-port or Output Single C-port:

5.0V3.0A, 15.0W;

9.0V2.0A, 18.0W;

12.0V1.5A, 18.0W;

Output A-port + Output C-port:

5.0V3.0A, 15.0W (3.0A in total);

Characteristics

Equipped with Smart IC (intelligent device detection for optimal charging current), output overcurrent limiting, output overvoltage protection. The USB sockets are only for power supply. Data transfer does not take place.

USB Charger fit into standard wall boxes from Etman (c-c 60mm). By surface fixing, please use surface house (Typed B240).

By surface fixing, in combination with a switch or others, please use double surface house (Typed B429).

Thermoplastic center plate is 55X55 mm, which fits into Etman "B" series combination plate.

Screw terminal, capacity: 1.5-2.5mm².

Only suitable for use in indoor areas.

Built-in protection circuit.



Type	Description/Remark
U703Q	Wall-Adapter, USB Power Output Ports

Flush-type RCCB socket for fixed installation**Technical Data:**

Rated voltage: 230VAC 50Hz

Rated current: 16A

 $I_{\Delta n} \leq 30\text{mA}$ $I_{\Delta n} = I_{nc} = 1500\text{A}$, type ATrip time $\leq 30\text{ms}$

Poles No.: 1P+N

IP-Class: IP44 (with mounting on level surface)**Technical info:**

The working principle of the safety socket outlets is the same as that of a residual current device.

The fault current protection related all devices and cables which are connected to the safety socket outlet.

Flush type.

Suitable for using in indoor and outdoor areas.

Rewirable, Screwless terminal, capacity: 1.5-2.5mm², the length of insulation to be removed is 12mm.

With shutter.

With plastic frame and cover, with a self-closing water proof lid.

Class I

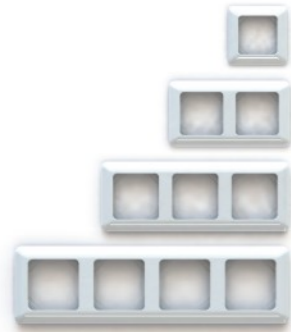
"T" is marked on the test button and "R" is marked on the reset button.



Type	Description/Remark
U209Q44R	RCCB Socket, Schuko type, 30mA, Ip44

Combination plate

All standard 55x55 mm central plate equipment will fit into the combination plate.
Switches need in addition a locking frame to fasten the combination plate to the switch-base.



Type	Description/Remark
U262	Single way frame
U205	Double way frame
U206	Three way frame
U234	four way frame

Blind Cover

Blind plate is for covering a not used hole in a combination plate.
In some cases the installer puts in for example two wall boxes in the wall but only use one. For this case we need a blind plate to cover another one.



U263



U264

Type	Description/Remark
U263	Blind plate
U264	Blind plate w/steel bracket

Spring, Φ 3.35*8mm

The spring is used to mounting in insert of our normal switches work as push button.



Type	Description/Remark
U492	Spring, Φ 3.35*8mm

Surface-type wall rocker switch for fixed installation, screw terminals

Technical Data: 16AX 250VAC

IP-Class: IP20

Certificate(s): CE, Semko,

Technical info:

Wiring diagram printed on the rear side.

Thermoplastic in the rocker and cover plate.

Screw terminals.

Flush wiring.

Screw distance cc 38 mm -cover plate cc 73 mm.

Space enough for cables up to 2.5 mm under the cover plate.

Base bottom plate acts at same time as a positioning guide by the door frame under installation.

Type	Description/Remark
U221	1 pole / 2-way, pattern No. 1/6
U222	2-pole , pattern No. 2
U223	1+2-pol , pattern No. 1+2
U224	1 pole and 2-way , pattern No. 5
U341	2 pole and 2-way , pattern No. 6+6
U344P	1-pol , plus w/spring (doorbell), pattern No. 1



U221



U222



U223



U224,U341



U344P

U series

Surface-type wall rocker switch for fixed installation, screw terminals, new size



U221E



U222E



U224E

Technical Data: 16AX 250VAC

IP-Class: IP20

Certificate(s): CE, Semko,

Technical info:

Wiring diagram printed on the rear side.

Thermoplastic in the rocker and cover plate.

Screw terminals.

Flush wiring.

Screw distance cc 38 mm -cover plate 75*84 mm.

Space enough for cables up to 2.5 mm under the cover plate.

Base bottom plate acts at same time as a positioning guide by the door frame under installation.

Type	Description/Remark
U221E	1 pole / 2-way, pattern No. 1/6
U222E	2-pole , pattern No. 2
U224E	1 pole and 2-way , pattern No. 5

Surface-type wall socket outlet for fixed installation, screw terminals

Technical Data: 16A 250VAC

IP-Class: IP20

Certificate(s): Semko

Technical info:

Surface mounted socket outlets with or without earth (schuko), with shutter, screw terminal.

Covering cap made of thermoplastic, which is less rigid but more durable than thermo-setting plastic.

Inclusive a back plate, on to which the socket insert is fixed.

Roomy space for cables under the broader covering cap. Fixing screw-holes in the back plate for the surface mounting, Screw distance cc 38 mm.

Type	Description/Remark
U1010	1-way socket , without earth



U1010



U1011

U series

Surface-type wall socket outlet for fixed installation, screw terminals

Technical Data: 16A 250VAC

IP-Class: IP20

Certificate(s): Semko

Technical info:

Surface mounted socket outlets with or without earth (schuko), with shutter, screw terminal.

Covering cap made of thermoplastic, which is less rigid but more durable than thermo-setting plastic.

Inclusive a back plate, on to which the socket insert is fixed.

Roomy space for cables under the broader covering cap. Fixing screw-holes in the back plate for the surface mounting, Screw distance cc 38 mm.

Type	Description/Remark
U1011	1-way socket , earthed
U2010	2-way socket , without earth



U2010



U2011

Surface-type wall socket outlet for fixed installation, screw terminals

Technical Data: 16A 250VAC

IP-Class: IP20

Certificate(s): Semko

Technical info:

Surface mounted socket outlets with or without earth (schuko), with shutter, screw terminal.

Covering cap made of thermoplastic, which is less rigid but more durable than thermo-setting plastic.

Inclusive a back plate, on to which the socket insert is fixed.

Roomy space for cables under the broader covering cap. Fixing screw-holes in the back plate for the surface mounting, Screw distance cc 38 mm.

Type	Description/Remark
U2011	2-way socket , earthed
U241	4-way socket , earthed



U241

U series

Surface splash proof wall socket outlet for fixed installation, screw terminals



U270



U271

Technical Data: 16A 250VAC

IP-Class: IP44 (The lowest IP degree must be considered when combinations of plug and socket outlets are in use)

Certificate(s): Semko

Technical info:

Surface mounted socket outlets with or without earth (schuko), with shutter, screw terminal.

Covering cap made of thermoplastic, which is less rigid but more durable than thermo-setting plastic.

Inclusive a back plate, on to which the socket insert is fixed.

Roomy space for cables under the broader covering cap. Fixing screw-holes in the back plate for the surface mounting, Screw distance cc 38 mm.

Type	Description/Remark
U270	1-way socket , earthed, IP44
U271	2-way socket , earthed, Ip44

Surface splash proof wall rocker switch for fixed installation, screw terminals



U280



U282



U284



U281

Technical Data: 16AX 250VAC

IP-Class:

IP44 (The lowest IP degree must be considered when combinations of plug and socket outlets are in use)

Certificate(s): CE, Semko

Technical info:

Surface mounted - protected against corrosion.

There is a knock-out draining hole in the bottom to let out condensation water.

Wiring diagram printed on the rear side.

Thermoplastic in the rocker and cover plate.

Screw terminals.

Flush wiring.

Type	Description/Remark
U280	2-pole, pattern No. 2
U282	1 pole / 2-way , pattern No. 1/6
U284	1 pole and 2-way, pattern No. 5
U281	2 x 2-pole , 16A , pattern No. 2, IP44

U series

Surface splash proof wall rocker switch for fixed installation, screw terminals

Technical Data: 16AX 250VAC

IP-Class:

IP44 (The lowest IP degree must be considered when combinations of plug and socket outlets are in use)

Certificate(s): CE, Semko

Technical info:

Surface mounted - protected against corrosion.

There is a knock-out draining hole in the bottom to let out condensation water.

Wiring diagram printed on the rear side.

Thermoplastic in the rocker and cover plate.

Screw terminals.

Flush wiring.



U410

Type	Description/Remark
U410	Turn switch , 2-pole , 16A , pattern No. 2, IP44

DCL plugs and sockets

Technical Data: 6A 250V~

Frequency: 50Hz

IP-Class: IP20

Certificate(s): CE, Semko

Product info:

DCL is a new plug and socket system for the connection of fixed lighting equipment, related standard EN 61995 valid from 2009-08-24.

This series includes:

Flush type roof DCL sockets:

Flush, round DCL sockets for roof box, includes suspension hook (Max load 15 kg), Collection thermoplastic has adopted newly developed operation. Attach screws applied in the correct mounting position c-c 67-78 mm, Fast connections for rigid conductors is up to 2.5 mm², external dimensions: Ø110 mm.

Fits to Etman roof boxes typed ETM002S-2, ETM002S-3 and flush type junction box. Fits to all standard roof boxes and flush type junction boxes that are deeper than 40mm.

Type	Description/Remark
U710	Flush type roof DCL sockets



U710

Surface type roof DCL sockets:

Surface, round DCL sockets has integrated bottom plate, mounting directly in the ceiling, with demountable suspension hook (Max load 15 kg), Collection thermoplastic has adopted newly developed operation. Integrated base plate with 2 each 16mm and 20mm knockouts. The cover has 10pcs multiple size combined knock-outs on the sides of the cover.

Type	Description/Remark
U712	Surface type roof DCL sockets



U712

DCL plugs and sockets

Flush type wall DCL sockets:

Flush, square DCL sockets for wall installation boxes and junction boxes, Collection thermoplastic has adopted newly developed operation. Fast connections for rigid conductors is up to 2.5 mm². Support of non - leading composite material. Fits in all types of cans.

ETM713P: Fixing c-c 60 mm for mounting, External dimensions: 84 x 84mm, Thermoplastic center plate 55X55 mm, which fits into Etman "P" series combination plate. No visible screws. By surface fixing, please use surface house (Typed ETM240P). By surface fixing, in combination with a switch or other regulators/dimmers, please use double surface house (Typed ETM429P).

ETM714P: Fixing c-c 60, 67, 70 mm for mounting, external dimensions: 95 x 95mm

Type	Description/Remark
U713	Flush type wall DCL sockets, 84x84
U714	Flush type wall DCL sockets, 95x95



U713



U714

DCL plugs and sockets

Surface type wall DCL sockets:

Surface wall mounting has integrated bottom plate, Collection thermoplastic with newly developed operation. Integrated base plate with both 16mm and 20mm knockouts. The cover has 12pcs multiple size combined knock-outs on the sides of the cover. Can be mounted on the leading surface, fixing c-c 38 mm for mounting Fast connections conductors up to 2.5 mm², External dimensions: 65 x 65mm

Type	Description/Remark
U715	Surface type wall DCL sockets



Spacer

Ø110 mm, H=10mm

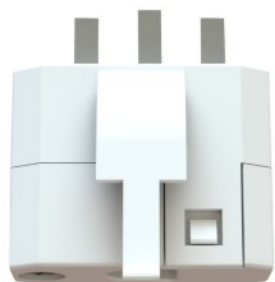
For ETM710P Flush type roof DCL sockets possible mounting in 32mm deep roof box

Type	Description/Remark
U711	Spacer for flush type wall DCL sockets



U series

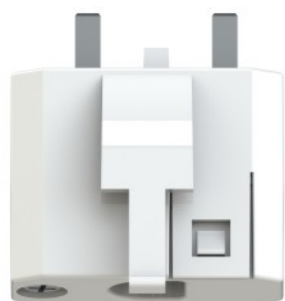
DCL plugs and sockets



DCL rewirable plug

Rewirable.
With straight cable connection.
Screw terminals, for flexible conductor up to 1.5mm².
With cable fixation screw, for external dimensions of flexible cables up to Ø8.0mm.

Type	Description/Remark
U721	DCL plug, rewirable
U722	DCL plug, rewirable, without earth



DCL plug with cable

Non-rewirable.
DCL is a new plug and socket system for the connection of fixed lighting equipment, related standard EN 61995 valid from 2009-08-24.
Straight cable entry.

Type	Description/Remark
U723	Plug with cable H03VV-F 3G0.75mm ² /0.155M, with earth
U724	Plug with cable H03VVH2-F 2X0.75mm ² /0.155M, without earth



Lamp plug and sockets

Technical Data: 6A 250VAC

IP-Class: IP20

Certificate(s): CE, Semko

Flush type roof lamp sockets

Flush, round lamp sockets for roof box, with suspension hook, Collection thermoplastic with newly developed operation. Speed Connections with the lever of dismantling of the leaders. Attach Screws applied in the correct mounting position c-c 70-78 mm, Lever for easy dismantling of conductors, Fast connections conductors up to 2.5 mm², External dimensions: Ø110 mm

Type	Description/Remark
U371-1	Lamp socket , 2 pol without earth , with pothook
U371-2	Lamp socket , 3-pol , with pothook



U371-1



U371-2

Surface type roof lamp sockets

Surface, round lamp sockets ,mounting directly in the ceiling, with demountable suspension hook. Collection thermoplastic with newly developed operation with fast connections, lever of dismantling of the leaders. Can also be mounted on an existing takdosa. Fixing c-c 70-78 mm for mounting, Fast connections conductors up to 2.5 mm², External dimensions: Ø110 mm

Type	Description/Remark
U373-1	Lamp socket , 2 pol without earth , with slot
U373-2	Lamp socket , 3-pol , with slot



U373-1



U373-2

Lamp plug and sockets

Surface type wall lamp sockets

Surface wall mounting has integrated bottom plate, Collection thermoplastic with newly developed operation. Speed Connections with the lever of dismantling of the leaders. Integrated base plate with many attachment options facilitates fitting not to trim. Can be mounted on the leading surface
Fast connections conductors up to 2.5 mm², External dimensions: 65 x 65mm



U372-1



U372-2

Type	Description/Remark
U372-1	Lamp socket, 2 pol ,without earth, surface-type
U372-2	Lamp socket, 3 pol , 3-pol , surface-type

Flush type wall lamp sockets

Flush, square lamp sockets for wall mounting the device and junction boxes, Collection thermoplastic with newly developed operation. Speed Connections with the lever of dismantling of the leaders. Support of non - leading composite material. Fits in all types of cans. Fixing c-c 60, 67, 70 mm for mounting, fast connections conductors up to 2.5 mm², External dimensions: 95 x 95mm



U570-1



U579

Type	Description/Remark
U570-1	Lamp socket , 2 pol , without earth
U579	2-way Lamp socket , 2 pol , without earth

Lamp plug and sockets

This series also includes:
- lamp sockets for cable installation

Type	Description/Remark
U374	Earthed
U377	Without earth
U574	3-pol



U374

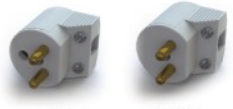
U377



U574

- Lamp plugs with side cable connection

Type	Description/Remark
U375	Earthed
U378	Without Earth
U575	3-pol



U375

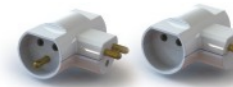
U378



U575

- Lamp adaptor

Type	Description/Remark
U560	Lamp Adaptor 2x6A front view , Earthed
U560-1	Lamp Adaptor 2x6A front view , Without Earth
U561	Lamp Adaptor 2x6A front view , 3-pol



U560

U560-1



U561

Lamp plug and sockets

Downlight box



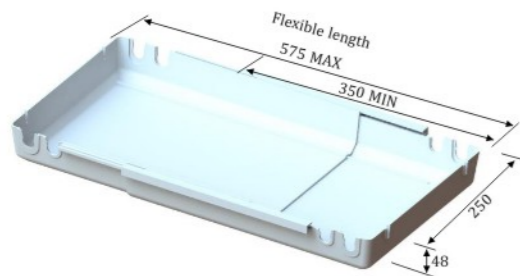
For downlights and related accessories, the box with four fixed 16mm entries, locking springs, sealing plug included. The box with four 16mm and two 20mm knockout also, you can open it when you need.

Type	Description/Remark
B608	Downlight box
B609	Downlight box with tape

For LED Downlight

Size: 350-575*230/250*48mm
 Halogen-free
 850°C glow wire
 2 screw markings on two short sides
 Four 16mm and 20mm open inlets for flex-tube directly
 Operating temperature range: -25°C to +90°C

Type	Description/Remark
B671	For LED downlight



Accessories

Lamp holder

E14

Art.No.	Type	Description/Remark
86300110	863001	white
86300120	863001	black



E27

Art.No.	Type	Description/Remark
86300210	863002	white
86300220	863002	black



E14, whole external thread

Art.No.	Type	Description/Remark
86300310	863003	white
86300320	863003	black



E27, whole external thread

Art.No.	Type	Description/Remark
86300410	863004	white
86300420	863004	black



E14 half external thread

Art.No.	Type	Description/Remark
86302010	863020	white
86302020	863020	black



E27 half external thread

Art.No.	Type	Description/Remark
86302110	863021	white
86302120	863021	black



Accessories

Lamp holder

E27 with switch



Art.No.	Type	Description/Remark
86302210	863022	white
86302220	863022	black

E27 with switch, whole external thread



Art.No.	Type	Description/Remark
86302310	863023	white
86302320	863023	black

E27 with switch, half external thread



Art.No.	Type	Description/Remark
86302410	863024	white
86302420	863024	black

Ring for E14



Art.No.	Type	Description/Remark
86300710	863007	white
86300720	863007	black

Ring for E27



Art.No.	Type	Description/Remark
86300810	863008	white
86300820	863008	black

Accessories

Lamp holder

Cable fixer

Art.No.	Type	Description/Remark
86400110	864001	white
86400211	864002	black



Cable fixer

Art.No.	Type	Description/Remark
86400310	864003	white
86400411	864004	black



Cable fixer set

Art.No.	Type	Description/Remark
86400210	864002	2 pcs plastic tension release with inner thread 5 pcs hexagonal nut M10x1 2 pcs thread pipe M10x1 h.15mm 2 pcs thread pipe M10x1 h.50mm



E27 for ceiling

Art.No.	Type	Description/Remark
86301510	ETM323S	white, screwless terminals



E27 for wall

Art.No.	Type	Description/Remark
86301610	ETM324S	white, screwless terminals



Hanging cable without external thread

Art.No.	Type	Description/Remark
86700110	864140	1m cable



Accessories

Lamp holder

Hanging cable with external thread



Art.No.	Type	Description/Remark
86700210	864141	1m cable

Ceiling cup



Art.No.	Type	Description/Remark
86600110	866001	Ceiling cup, Dia.145mm

Cable handle



Art.No.	Type	Description/Remark
86400501		Cable handle

Rewirable Switches

2(1)A 250V ~
1-pol



Art.No.	Type	Description/Remark
83505010	ACS1001	White
83505011	ACS1001	Black
83506010	ACS1001	Silver
83507010	ACS1001	Brass
83509010	ACS1001	Grey

Lamp plugs and sockets with cable

Art.No.	Type	Description/Remark
86212112	I17	Lamp plug without earth with cable H03VVH2-F 2x0.75mm ² 0.2M
86212113	I17	Lamp plug without earth with cable H03VVH2-F 2x0.75mm ² 2.0M
86212114	I17	Lamp plug without earth with cable H03VVH2-F 2x0.75mm ² 2.2M
86212115	I17	Lamp plug without earth with cable H03VVH2-F 2x0.75mm ² 3.0M
86212010	I18	Lamp plug earthed with cable H03VV-F 3Gx0.75mm ² 0.11M
86212011	I18	Lamp plug earthed with cable H03VV-F 3Gx0.75mm ² 0.155M
86212012	I18	Lamp plug earthed with cable H03VV-F 3Gx0.75mm ² 0.2M
86212013	I18	Lamp plug earthed with cable H03VV-F 3Gx0.75mm ² 2.0M
86212014	I18	Lamp plug earthed with cable H03VV-F 3Gx0.75mm ² 2.2M
86212015	I18	Lamp plug earthed with cable H03VV-F 3Gx0.75mm ² 3.0M

Art.No.	Type	Description/Remark
86415010	I17+U377	Lamp plug without earth with cable H03VVH2-F2X0.75MM2 3M enclosed socket without earth
86416010	I18+U374	Lamp plug earthed with cable H03VV-F 3G0.75MM2 3M enclosed socket with earth



I17



I18



I17+U377



I18+U374

Lamp plug without earth with E27 lamp holder

Art.No.	Type	Description/Remark
86414010	I17+E27	Plastic lamp holder, H03VVH2-F 2x0.75mm ² /0.1M
86414020	I17+E27	Plastic lamp holder, H03VVH2-F 2x0.75mm ² /0.155M
86414030	I17+E27	Bakelite lamp holder, H03VVH2-F 2x0.75mm ² /0.1M
86414040	I17+E27	Bakelite lamp holder, H03VVH2-F 2x0.75mm ² /0.155M



Euro plug with cables

DCL plug with E27 lamp holder

Technical Data: 6A 250V~

Frequency: 50Hz

IP-Class: Ip20

Certificate(s): CE, Semko

Product info:

DCL is a new plug and socket system for the connection of fixed lighting equipment, related standard EN 61995 valid from 2009-08-24.

Portable.

0.1M H03VVH2-F 2x0.75mm² VDE cable.

Type	Description/Remark
U724+E27	DCL plug with E27 lamp holder, cable 0.1M



Accessories

Euro plug with cables



Art.No.	Type	Description/Remark
86410010	864100	2M H03VVH2-F 2x0.75mm ² cable w/Europlug
86410011	864100	2.5M H03VVH2-F 2x0.75mm ² cable w/Europlug
86410012	864100	3.5M H03VVH2-F 2x0.75mm ² cable w/Europlug

Euro plug with cables & switch



Art.No.	Type	Description/Remark
86411010	864110	1.5+0.5M H03VVH2 -F 2x0.75mm ² white cable w/switch
86411020	864110	1.8+0.7M H03VVH2 -F 2x0.75mm ² cable w/switch
86411030	864110	1.5+0.5M H03VVH2 -F 2x0.75mm ² cable w/switch
86411040	864110	1.5+3.5M H03VVH2 -F 2x0.75mm ² cable w/switch
86411021	864110	1.0+2.0M H03VVH2 -F 2x0.75mm ² cable w/switch

Lamp base set



Art.No.	Type	Description/Remark
86412010	ETM244S	2M H03VVH2-F 2x0.75mm ² cable w/Europlug , E14 lamp holder and fittings
86412030	ETM244S	3M H03VVH2-F 2x0.75mm ² cable w/Europlug , E14 lamp holder and fittings
86412035	ETM244S	3.5M H03VVH2-F 2x0.75mm ² cable w/Europlug , E14 lamp holder and fittings

Art.No.	Type	Description/Remark
86413010	864130	Xmas star cable : 4.0M H03VVH2-F 2x0.75mm ² cable w/Europlug & switch & E14 Lamp Holder & hanging

Art.No.	Type	Description/Remark
86411012	864110	2M+0.5M H03VVH2-F 2x0.75mm ² cable w/Europlug & switch , bronze colour

Rewirable Dimmer

Product Information

The dimmer is for indoor installation, suitable for dimmable lamp drivers. Rewirable dimmer is installed on normal desks together with push button switch.

Regulated by one push button, when short press on button is ON/OFF, and long press on button is rising/lowering the brightness. One time long press is rising brightness, and next time is lowering brightness.

The lamp stops at highest/lowest brightness level.

Technical Specifications

Line input: 230VAC 50Hz

Load power: 0.5A/3-100VA

Load type: 3-100VA Incandescent lamp load

3-60VA LED RC

3-20VA LED RL

Notes:

3-60VA LED RC: Dimmable LED lamp (trailing edge, RC mode),
Dimmable LED filament (trailing edge, RC mode)

3-20VA LED RL: Dimmable LED lamp (leading edge, RL mode)
Dimmable LED filament (leading edge, RL mode)

Functional Description

Push Button

- Push button is on top side of the rewirable dimmer.
- Power on or power off by short press time (Typically <0.5S).
- Dimming by long press time (Typically >0.5S) after power on.
- Long press dimming the lamp brighter, till maximum brightness and stopped. Next long press dimming the lamp darker, till minimum brightness and stopped.

MIN

- Tuning MIN changes the lowest brightness.
- Clockwise tuning the MIN will result in brighter, and vice versa.

Mode Selection

- Mode selection: Select working mode on leading edge or trailing edge.
- Dimmer works on leading or trailing edge mode by setting the screw as follows.
- Leading edge (RL mode): tuning the mode selection potentiometer counter-clockwise till the end.
- Trailing edge (RC mode): tuning the potentiometer clockwise till the end.
- It is recommended that change the dimmer mode when the dimmer is in power off state. If changing the leading or trailing edge when the dimmer is powered on, the dimmer will shut down and restart again without a press on push button.

Memory Function

- The dimmer will dim the lamp brightness close to maximum brightness at first power on during installation.
- Memory function: The memory function is a default function. In this mode, after the first power on, when a short push occurs, the lamp will be powered on to the brightness same as the brightness when last normal dimmer powers off by the push button, excluding dimmer abnormal power off such as removal the plug off the socket.

Soft Start/Stop Function

- The soft start/soft stop function is a default function for longer dimmer lifetime.
- Soft start: The dimmer will be powered on with soft start after a short push.
- Soft stop: The dimmer will be powered off with soft stop after a short push

Art.No.	Type	Description/Remark
8630320	U320	Rewirable White dimmer, no cable mounted
8630321	U320	Rewirable Black dimmer, no cable mounted
8631320	U320+cable	Rewirable White dimmer with 1.2 meter white cable with EURO plug + 0.8 meter white cable
8631321	U320+cable	Rewirable Black dimmer with 1.2 meter black cable with EURO plug + 0.8 meter black cable





ACP1001 ACP1002



ACP1003-1 ACP1003

Rewirable plug, IP20

Art.No.	Type	Description/Remark
83011050	ACP1001	Without earth straight , White
83011051	ACP1001	Without earth straight , Black
83012120	ACP1002	Earthed , straight , White
83012121	ACP1002	Earthed , straight , Black
83013050	ACP1003-1	Without earth , side , White
83013051	ACP1003-1	Without earth , side , Black
83013150	ACP1003	Earthed , side , White
83013151	ACP1003	Earthed , side , Black

Rewirable socket, IP20



ACJ1011 ACJ1010

Art.No.	Type	Description/Remark
83111010	ACJ1011	Without earth , White
83111011	ACJ1011	Without earth , Black
83111110	ACJ1010	Earthed , White
83111111	ACJ1010	Earthed , Black

Rewirable plug, IP44

Resist on low temperature condition: -30 degree

Art.No.	Type	Description/Remark
ACP100244		Plug earthed , straight , Black, IP44



ACP100244

Rewirable socket, IP44

Resist on low temperature condition: -30 degree

Spring lid.

Art.No.	Type	Description/Remark
83112121	ACJ101044	Socket earthed , Red, IP44
83112122	ETM212S-1	2-way socket earthed , Yellow , Ip44 , without shutter
83112123	ETM212S-1	2-way socket earthed , Red , IP44 , without shutter
83112222	ETM212S	2-way socket earthed , Yellow , IP44, with shutter
83112223	ETM212S	2-way socket earthed , Red , IP44, with shutter



ACJ101044 ETM212S-1

Rewirable plug, Rubber

Resist on low temperature condition: -35 degree

Art.No.	Type	Description/Remark
83014420	ETM227S	Earthed , straight , black, IP44
83014421	ETM227S	Earthed , straight , yellow, IP44
83014422	ETM227S	Earthed , straight , orange, IP44



ETM227S

Rewirable socket, Rubber

German IP44

Resist on low temperature condition: -35 degree , without shutter

Art.No.	Type	Description/Remark
83114420	ETM228S	Earthed , straight , black, IP44
83114421	ETM228S	Earthed , straight , yellow, IP44
83114422	ETM228S	Earthed , straight , orange, IP44



ETM228S

Adaptor



Art.No.	Type	Description/Remark
83212010	ACA2010-1	2x16A front view , without earth
83212111	ACA2010	2x16A front view , earthed

Extension cord, PVC



Art.No.	Type	Description/Remark
83310220	ACPW02	H03VVH2-F 2x0.75mm ² / 2M
83310230	ACPW02	H03VVH2-F 2x0.75mm ² / 3M
83310250	ACPW02	H03VVH2-F 2x0.75mm ² / 5M



Art.No.	Type	Description/Remark
83311303	ACPW20	H05VV-F 3G1.0mm ² / 3M,earthed
83311313	ACPW20	H05VV-F 3G1.5mm ² / 3M,earthed
83311315	ACPW20	H05VV-F 3G1.5mm ² / 5M,earthed
83311319	ACPW20	H05VV-F 3G1.5mm ² / 10M,earthed



Art.No.	Type	Description/Remark
83312003	ACPW13	Ext. H05VV-F 3G1.0mm ² / 3M,earthed
83312013	ACPW13	Ext. H05VV-F 3G1.5mm ² / 3M,earthed
83312015	ACPW13	Ext. H05VV-F 3G1.5mm ² / 5M,earthed
83312019	ACPW13	Ext. H05VV-F 3G1.5mm ² / 10M,earthed

Rubber extension cord, IP44

Resist on low temperature condition: -35 degree
Spring lid.

Art.No.	Type	Description/Remark
83311001	ACPW37+ACJ101044	H05RR-F 3G1.5mm ² / 15M (plug and cable: Black, socket: Red)
83311002	ACPW37+ACJ101044	H05RR-F 3G1.5mm ² / 20M (plug and cable: Black, socket: Red)
83311003	ACPW37+ACJ101044	H05RR-F 3G1.5mm ² / 25M (plug and cable: Black, socket: Red)
83311004	ACPW37+ACJ101044	H05RR-F 3G1.5mm ² / 50M (plug and cable: Black, socket: Red)
83311005	ACPW37+ACJ101044	H07RN-F 3G1.5mm ² / 10M (plug and cable: Black, socket: Red)
83311006	ACPW37+ACJ101044	H07RN-F 3G1.5mm ² / 15M (plug and cable: Black, socket: Red)
83311007	ACPW37+ACJ101044	H07RN-F 3G1.5mm ² / 20M (plug and cable: Black, socket: Red)



Rubber extension cord, IP44

Resist on low temperature condition: -35 degree
Spring lid.

Art.No.	Type	Description/Remark
83312102	ACPW37+ETM212S-1	2 -way Ext. H05RR-F 3G1.5mm ² / 15M (plug and cable:Black,socket: Red)
83312103	ACPW37+ETM212S-1	2 -way Ext. H05RR-F 3G1.5mm ² / 20M (plug and cable:Black,socket: Red)
83312104	ACPW37+ETM212S-1	2 -way Ext. H05RR-F 3G1.5mm ² / 25M (plug and cable:Black,socket: Red)
83312105	ACPW37+ETM212S-1	2 -way Ext. H05RR-F 3G1.5mm ² / 50M (plug and cable:Black,socket: Red)
83312110	ACPW37+ETM212S-1	2 -way Ext. H07RN-F 3G1.5mm ² / 10M (plug and cable:Black,socket: Red)
83312111	ACPW37+ETM212S-1	2 -way Ext. H07RN-F 3G1.5mm ² / 15M (plug and cable:Black,socket: Red)
83312112	ACPW37+ETM212S-1	2 -way Ext. H07RN-F 3G1.5mm ² / 20M (plug and cable:Black,socket: Red)



German IP44
Resist on low temperature condition: -35 degree

Art.No.	Type	Description/Remark
83311803	ACPW38	Ext. H05RR-F 3G1.5mm ² / 20M , Black
83311804	ACPW38	Ext. H05RR-F 3G1.5mm ² / 25M , Black
83311805	ACPW38	Ext. H05RR-F 3G1.5mm ² / 50M , Black
83311809	ACPW38	Ext. H07RN-F 3G1.5mm ² / 5M , Black
83311810	ACPW38	Ext. H07RN-F 3G1.5mm ² / 10M , Black
83311811	ACPW38	Ext. H07RN-F 3G1.5mm ² / 15M , Black
83311812	ACPW38	Ext. H07RN-F 3G1.5mm ² / 20M , Black
83311813	ACPW38	Ext. H07RN-F 3G1.5mm ² / 25M , Black



PDB



PDBs are normally installed on the load side of under centers.
PDBs are designed and certified according to EN60439-4:2004 used in conjunction with EN 60439-1:1999 + A1:2004.

PDBs are available in bag models, mini and midi bag 16 to 32 A and as cabinet models 32 to 63 A.
Made of durable thermoplastic nature.

Manufactured according to standard EN60439-4:2004 used in conjunction with EN 60439-1:1999 + A1:2004.
CE marked.

- Small and handy construction central.
- Enclosure is made of durable thermoplastic nature.
- Self-closing transparent lid over miniature circuit breakers.
- Grip-friendly handle with hole to fix a hook
- Contains earth as the default outgoing groups fused with miniature circuit breakers of the C-characteristic

PDB

Art.No.	Description/Remark
83611701	16A 400V, 4 Schuko sockets, 1-pole fuse Input: 416-6 industrial plug Output: Secured by RCCB (40A, 4P, 0.03A) 4×16A Schuko socket, Secured by 2×MCB(16A, 1P) 2×416-6 industrial socket
83611702	32A 400V, 4 Schuko sockets, 1-pole fuse Input: 432-6 industrial plug Output: Secured by RCCB (40A, 4P, 0.03A) 4×16A Schuko socket, Secured by 2×MCB(16A, 1P) 1×416-6 industrial socket, Secured by MCB(16A, 4P) 1×432-6 industrial socket
83611703	16A 400V, 8 Schuko sockets, 1-pole fuse Input: 416-6 industrial plug Output: Secured by RCCB (40A, 4P, 0.03A) 8×16A Schuko socket, Secured by 4×MCB(16A, 1P) 2×416-6 industrial socket
83611704	32A 400V, 8 Schuko sockets, 1-pole fuse Input: 432-6 industrial plug Output: Secured by RCCB (40A, 4P, 0.03A) 8×16A Schuko socket, Secured by 4×MCB(16A, 1P) 1×416-6 industrial socket, Secured by MCB(16A, 4P) 1×432-6 industrial socket



PDB

Art.No.	Description/Remark
1523187 83610700	16A 230V, 4 Schuko sockets, 2-pole fuse Input: 316-9 industrial plug Output: Secured by RCCB (40A, 4P, 0.03A) 4×16A Schuko socket, Secured by 2×MCB(16A, 2P) 2×316-9 industrial socket
1523188 83611000	16A 400V, 4 Schuko sockets, 2-pole fuse Input: 416-6 industrial plug Output: Secured by RCCB (40A, 4P, 0.03A) 4×16A Schuko socket, Secured by 2×MCB(16A, 2P) 2×416-6 industrial socket
1501478 83610800	32A 230V, 4 Schuko sockets, 2-pole fuse Input: 332-9 industrial plug Output: Secured by RCCB (40A, 4P, 0.03A) 4×16A Schuko socket, Secured by 2×MCB(16A, 2P) 1×316-9 industrial socket, Secured by MCB(16A, 3P) 1×332-9 industrial socket
1501479 83611100	32A 400V, 4 Schuko sockets, 2-pole fuse Input: 432-6 industry plug Output: Secured by RCCB (40A, 4P, 0.03A) 4×16A Schuko socket, Secured by 2×MCB(16A, 2P) 1×416-6 industry socket, Secured by MCB(16A, 4P) 1×432-6 industry socket
1501480 83610900	32A 230V, 8 Schuko sockets, 2-pole fuse Input: 332-9 industrial plug Output: Secured by RCCB (40A, 4P, 0.03A) 8×16A Schuko socket, Secured by 4×MCB(16A, 2P) 2×332-9 industrial socket
1501481 83611200	32A 400V, 8 Schuko sockets, 2-pole fuse Input: 432-6 industrial plug Output: Secured by RCCB (40A, 4P, 0.03A) 8×16A Schuko socket, Secured by 3×MCB(16A, 2P), 1×416-6 industrial socket, Secured by MCB(16A, 4P) 1×432-6 industrial socket



Art.No.	Description/Remark
82501000	Floor Stand For Plastic PDB

